

© Copyright 2004 Garmin Ltd. or its subsidiaries

Garmin International, Inc.
1200 East 151st Street, Olathe, Kansas 66062, U.S.A.
Tel. 913/397.8200 or 800/800.1020
Fax 913/397.8282

Garmin (Europe) Ltd.
Unit 5, The Quadrangle, Abbey Park Industrial Estate, Romsey, SO51 9DL, U.K.
Tel. 44/0870.8501241
Fax 44/0870.8501251

Garmin Corporation
No. 68, Jangshu 2nd Road, Shijr, Taipei County, Taiwan
Tel. 886/2.2642.9199
Fax 886/2.2642.9099

All rights reserved. Except as expressly provided herein, no part of this manual may be reproduced, copied, transmitted, disseminated, downloaded or stored in any storage medium, for any purpose without the express prior written consent of Garmin. Garmin hereby grants permission to download a single copy of this manual onto a hard drive or other electronic storage medium to be viewed and to print one copy of this manual or of any revision hereto, provided that such electronic or printed copy of this manual must contain the complete text of this copyright notice and provided further that any unauthorized commercial distribution of this manual or any revision hereto is strictly prohibited.

Information in this document is subject to change without notice. Garmin reserves the right to change or improve its products and to make changes in the content without obligation to notify any person or organization of such changes or improvements. Visit the Garmin web site (www.garmin.com) for current updates and supplemental information concerning the use and operation of this and other Garmin products.

Garmin® and MapSource® are registered trademarks and cf Que™ and Que™ are trademarks of Garmin Ltd. or its subsidiaries and may not be used without the express permission of Garmin.

IMPORTANT NOTE: The Garmin cf Que has been tested and found to operate in a satisfactory manner when installed in Pocket PC's that meet the minimum operational requirements stated on the product package and on page vi of this guide. However, Garmin has no responsibility for the quality or the reliability of performance of those products.

A significant issue, is the variance in maximum speaker volume for Pocket PCs of different manufacturers. You may find the speaker volume of your Pocket PC to be compromised by road noise and its location in your vehicle when receiving turn-by-turn voice direction prompts while navigating with the cf Que. It is therefore recommended that you activate the "Attention Tone" feature to prepare you to listen in advance for each voice prompt. Instructions for activating the "Attention Tone" are found on Page 24 of this Guide. Other remedies may be third party devices that can amplify the speaker volume when connected to the auxiliary speaker port of your Pocket PC. Consult your Pocket PC retailer for information concerning these devices.

Touch-screen responsiveness for some Garmin Que operating features, such as slider controls, may vary from Pocket PC to Pocket PC.

**Software
License Agreement****Software License Agreement**

THIS SOFTWARE IS OWNED BY GARMIN CORPORATION (“GARMIN”) AND IS PROTECTED UNDER COPYRIGHT LAWS AND INTERNATIONAL COPYRIGHT TREATIES. THIS SOFTWARE IS LICENSED, NOT SOLD. THIS SOFTWARE IS PROVIDED UNDER THE FOLLOWING LICENSE WHICH DEFINES WHAT YOU MAY DO WITH THE PRODUCT AND CONTAINS LIMITATIONS ON WARRANTIES AND/OR REMEDIES.

IMPORTANT: CAREFULLY READ THIS LICENSE BEFORE USING THIS PRODUCT. INSTALLING, COPYING, OR OTHERWISE USING THIS PRODUCT INDICATES YOUR ACKNOWLEDGMENT THAT YOU HAVE READ THIS LICENSE AND AGREE TO ITS TERMS. IF YOU DO NOT AGREE, RETURN THE COMPLETE PRODUCT TO GARMIN INTERNATIONAL, INC. CUSTOMER SERVICE, 1200 EAST 151st STREET, OLATHE, KS 66062 WITHIN 10 DAYS OF THE DATE YOU ACQUIRED IT FOR A FULL REFUND.

1. LICENSE: GARMIN (“we” or “us”) provides you with storage media containing computer software (the “Program”) which may also include digital cartographic data and “online” or electronic documentation, and printed materials (together called the “Product”) and grants you a limited non-exclusive license to use the Product in accordance with the terms of this License Agreement. The copyright and all other rights to the Product shall remain with us. You must reproduce any copyright or other notice marked on the Product on all copies you make.

2. YOU MAY:

- a) install and use one copy of the Product on a single computer or network. This copy is to be used by only a single user at a time. If you wish to use the Product for more users, you will need an additional license for each user.
- b) make one copy of the Product for archive or backup purposes.
- c) use a copy of the Product on a home or portable computer if that copy is never loaded at the same time it is loaded on your primary computer.
- d) transfer the Product to someone else only if you assign all of your rights under this License, cease all use of the Product, erase or destroy any copy (including the hard disk copy) made in support of your use of the Product, and ensure that the other person agrees to the terms of this License.

3. YOU MUST NOT:

- a) make copies of the Product except as expressly permitted in Section 2 of this License.
- b) translate, reverse engineer, decompile, or disassemble the Product except to the extent the foregoing restriction is expressly prohibited by applicable law.
- c) rent, lease, loan, sub-license, distribute, assign, or transfer the Product except as set out in Section 2 (d) above.
- d) modify the Product or merge all or any part of the Product with another program.

4. TERM: This License shall continue for as long as you use the Product. However, this License will terminate automatically without notice from GARMIN if you fail to comply with any of its terms or conditions. You must agree, upon termination, to destroy all copies of the Product. The Limitations of Warranties and Liability set out below shall continue in force even after any termination.

5. LIMITATION OF WARRANTIES AND LIABILITY: THE PRODUCT IS PROVIDED ON AN "AS IS" BASIS, WITHOUT ANY WARRANTIES OR CONDITIONS, EXPRESS OR IMPLIED, INCLUDING, BUT NOT LIMITED TO, WARRANTIES OF MERCHANTABILITY, MERCHANTABILITY OR FITNESS FOR A PARTICULAR PURPOSE, OR THOSE ARISING BY LAW, STATUTE, USAGE OF TRADE, OR COURSE OF DEALING. THE ENTIRE RISK AS TO THE RESULTS AND PERFORMANCE OF THE PRODUCT IS ASSUMED BY YOU. NEITHER WE NOR OUR DEALERS OR SUPPLIERS SHALL HAVE ANY LIABILITY TO YOU OR ANY OTHER PERSON OR ENTITY FOR ANY INDIRECT, INCIDENTAL, SPECIAL, OR CONSEQUENTIAL DAMAGES WHATSOEVER, INCLUDING, BUT NOT LIMITED TO, LOSS OF REVENUE OR PROFIT, LOST OR DAMAGED DATA OR OTHER COMMERCIAL OR ECONOMIC LOSS, EVEN IF WE HAVE BEEN ADVISED OF THE POSSIBILITY OF SUCH DAMAGES, OR THEY ARE FORESEEABLE. WE ARE ALSO NOT RESPONSIBLE FOR CLAIMS BY A THIRD PARTY. OUR MAXIMUM AGGREGATE LIABILITY TO YOU SHALL NOT EXCEED THE AMOUNT PAID BY YOU FOR THE PRODUCT. THE LIMITATIONS IN THIS SECTION SHALL APPLY WHETHER OR NOT THE ALLEGED BREACH OR DEFAULT IS A BREACH OF A FUNDAMENTAL CONDITION OR TERM OR A FUNDAMENTAL BREACH. SOME STATES/COUNTRIES DO NOT ALLOW THE EXCLUSION OR LIMITATION OF LIABILITY FOR CONSEQUENTIAL OR INCIDENTAL DAMAGES, SO THE ABOVE LIMITATION MAY NOT APPLY TO YOU.

6. RESTRICTED RIGHTS: If this Product is acquired by or for the U.S. Government, then it is provided with Restricted Rights. Use, duplication, or disclosure by the U.S. Government is subject to restrictions as set forth in subparagraph (c)(1)(ii) of The Rights in Technical Data and Computer Software clause at DFARS 252.227-7013, or subparagraphs (c)(1) and (2) of the Commercial Computer Software - Restricted Rights at 48 CFR 52.227-19, or clause 18-52.227-86(d) of the NASA Supplement to the FAR, as applicable. The contractor/manufacturer is GARMIN International, Inc., 1200 E. 151st Street, Olathe, KS 66062, USA.

7. EXPORT CONTROLS: You agree not to export or re-export the Product to any country in violation of the export control laws of the United States of America.

8. GENERAL: This License is the entire agreement between us, superseding any other agreement or discussions, oral or written, and may not be changed except by a signed agreement. This License shall be governed by and construed in accordance with the laws of the State of Kansas, United States of America. If any provision of this License is declared by a court of competent jurisdiction to be invalid, illegal, or unenforceable, such a provision shall be severed from the License and the other provisions shall remain in full force and effect.

cf Que™ 1620

Introduction

FCC Compliance Information

The cf Que™ 1620 complies with Part 15 of the FCC interference limits for Class B digital devices FOR HOME OR OFFICE USE. These limits are designed to provide more reasonable protection against harmful interference in a residential installation, and are more stringent than “outdoor” requirements.

Operation of this device is subject to the following conditions: (1) This device may not cause harmful interference, and (2) this device must accept any interference received, including interference that may cause undesired operation.

This equipment generates, uses and can radiate radio frequency energy and, if not installed and used in accordance with the instructions, may cause harmful interference to radio communications. However, there is no guarantee that interference will not occur in a particular installation. If this equipment does cause harmful interference to radio or television reception, which can be determined by turning the equipment off and on, the user is encouraged to try to correct the interference by one of the following measures:

- Reorient or relocate the receiving antenna.
- Increase the separation between the equipment and the receiver.
- Connect the equipment into an outlet on a circuit different from that to which the receiver is connected.
- Consult the dealer or an experienced radio/TV technician for help.

The cf Que™ does not contain any user-serviceable parts. Repairs should only be made by an authorized Garmin service center. Unauthorized repairs or modifications could result in permanent damage to the equipment, and void your warranty and your authority to operate this device under Part 15 regulations.

Warnings and Precautions

CAUTION: Use the cf Que™ at your own risk. To reduce the risk of unsafe operation, carefully review and understand all aspects of this Owner’s Manual—and thoroughly practice operation using the simulator mode prior to actual use. When in actual use, carefully compare indications from the cf Que™ to all available navigation sources, including the information from other NAVAIDs, visual sightings, charts, etc. For safety, always resolve any discrepancies before continuing navigation.

CAUTION: IT IS THE USER’S RESPONSIBILITY TO USE THIS PRODUCT PRUDENTLY. THIS PRODUCT IS INTENDED TO BE USED ONLY AS A NAVIGATIONAL AID AND MUST NOT BE USED FOR ANY PURPOSE REQUIRING PRECISE MEASUREMENT OF DIRECTION, DISTANCE, LOCATION OR TOPOGRAPHY. THIS PRODUCT SHOULD NOT BE USED AS AN AID TO DETERMINE GROUND PROXIMITY FOR AIRCRAFT NAVIGATION.

CAUTION: The electronic chart is an aid to navigation and is designed to facilitate the use of authorized government charts, not replace them. Only official government charts and notices to mariners contain all information needed for safe navigation – and, as always, the user is responsible for their prudent use.

cf Que™ 1620

Introduction

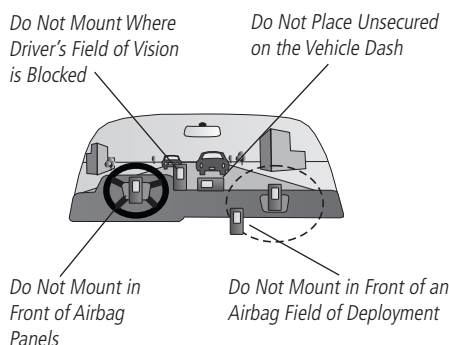
Warnings and Precautions

MAP DATA INFORMATION: One of the goals of Garmin is to provide customers with the most complete and accurate cartography that is available to us at a reasonable cost. We use a combination of governmental and private data sources, which we identify as required in product literature and copyright messages displayed to the consumer. Virtually all data sources contain inaccurate or incomplete data to some degree. This is particularly true outside the United States, where complete and accurate digital data is either not available or prohibitively expensive.

WARNING: The Global Positioning System (GPS) is operated by the United States government, which is solely responsible for its accuracy and maintenance. The system is subject to changes which could affect the accuracy and performance of all GPS equipment. Although the Garmin cf Que™ 1620 is a precision electronic NAVigation AID (NAVAID), any NAVAID can be misused or misinterpreted and, therefore, become unsafe.

WARNING: This product, its packaging, and its components contain chemicals known to the State of California to cause cancer, birth defects, or reproductive harm. This Notice is being provided in accordance with California's Proposition 65. If you have any questions or would like additional information, please refer to our web site at <http://www.garmin.com/prop65>.

Important! Because the Garmin cf Que 1620 can be used for vehicular navigation, important safety considerations must be observed. Please read and observe the instructions on this page.



Safety Warnings and Cautions—Read This First!

WARNING: For use in vehicles, it is the sole responsibility of the owner/operator of a vehicle equipped with a PDA with the cf Que™ 1620 installed, to place and secure the device so that it will not interfere with the vehicle operating controls and safety devices, obstruct the driver's view of driving conditions, or cause damage or personal injury in the event of an accident.

Do not mount the PDA over airbag panels or in the field of airbag deployment. Airbags expand with a rapid force that can propel objects in their path towards the vehicle driver or passengers causing possible injury. Refer to airbag safety precautions contained in the vehicle owner's manual.

Do not mount the PDA in a place where the driver or passengers are likely to impact it in a collision. The mounting hardware provided by Garmin is not warranted against collision damage or the consequences thereof.

WARNING: When used in vehicles, it is the sole responsibility of the driver of the vehicle to operate the vehicle in a safe manner, maintain full surveillance of all driving conditions at all times, and not become distracted by the PDA to the exclusion of safe driving practices. It is unsafe to operate the controls of the PDA while you are driving. Failure by the driver of a vehicle equipped with a PDA with cf Que 1620 installed to pay full attention to operation of the vehicle and road conditions while the vehicle is in motion could result in an accident with property damage and personal injury.

Table of Contents

Chapter 1: Introduction	i-vi	GPS Info Page.....	20
Software License Agreement.....	i-ii	Routes.....	21-27
FCC Compliance Information.....	iii	Creating a Route.....	21-22
Warnings and Precautions.....	iii-iv	Route Navigation.....	23
Table of Contents.....	v	Viewing the Turns Page.....	23
About the Manuals.....	vi	Saving a Route.....	23
		Customizing Route Navigation.....	24-26
		Road and Area Avoidance.....	25
Chapter 2: GPS Applications	1-27	Setting a Home Point.....	26
Starting Up the cf Que 1620.....	1	Adding Via Points to a Route.....	26
Viewing the Map Page.....	1	Detours.....	27
Initializing the Receiver.....	1	Recalculating a Route.....	27
Using the Map Page.....	2-3	Voice Guidance.....	27
Setting Up the Map Page Data Fields.....	3-4	Utilities.....	28
The Main Menu.....	6	The Track Log.....	28
Map Setup.....	7-9	Recording a Track Log.....	28
Map Detail, Orientation and Color.....	7	Saving a Track.....	28
MapSource Information.....	7	Editing Track Details.....	28
Delete Maps.....	7	Clearing the Track Log.....	28
Line Settings.....	8	The Sun and Moon Tables.....	29
Map Point Settings.....	8	The Hunt and Fish Tables.....	29
Area Settings.....	8	Measure Distance.....	30
City Settings.....	9	Trip Computer.....	31
Marine.....	9	Resetting the Trip Computer.....	31
Topo.....	9	Chapter 3: Hardware Mapping	32-33
Navigation.....	9	The Hard Buttons.....	32-33
System Setup.....	10-11	The Arrow Button.....	32
General Settings.....	10	The Jog Button.....	32
Routing Settings.....	10	The Program Buttons.....	33
Guidance Settings.....	10	Chapter 4: Map Data	34-35
Avoidance Settings.....	11	Transferring Other Types of Detailed Maps from MapSource...34	
Units Settings.....	11	Transferring Waypoints and Saved Tracks to MapSource.....35	
Buttons Mapping.....	11	Chapter 5: Additional Information	36-39
Language Selection.....	11	Specifications.....	36-37
The Find Feature.....	12-19	Troubleshooting Guide.....	38
Using the Find Feature to Search for a Destination.....	12	Accessories.....	39
Searching for Cities.....	13	Index	40-41
Searching for an Address.....	14		
Searching for an Intersection.....	15		
Searching for a Point of Interest.....	16		
Searching for a Waypoint.....	17		
Creating a Waypoint.....	18		
Editing Waypoints.....	19		
Deleting a Waypoint.....	19		

cf Que™ 1620

Introduction

About the Manuals

Introduction

The Garmin cf Que™ 1620 is designed to use Garmin GPS technology as an application with a Pocket PC to provide you with navigational guidance. Your cf Que 1620 comes with three manuals.

“Read This First” - Setup Guide

The Setup Guide gives you computer connection and software installation instructions, and other important details. Before reading the other manuals, read the Setup Guide which is printed on the Installation CD case. (Available only on the Installation CD.)

Quick Start Guide

The Quick Start Guide tells you how to get started navigating with a convenient reference for basic features. This is a hard copy that you can carry with you as a quick reminder of how features operate and how to access them.

cf Que 1620 Application Guide

This Applications Guide describes, in detail, how to use the cf Que™ 1620 add-on application and hardware for navigation. While this document is in portable document file (pdf) form, it can be printed out to a hard copy which may be of benefit when you take the device outside to navigate. (Available only on the Installation CD.)

Editor’s Note:

The above manuals and guides were created using the cf Que and Que operating software installed on a Pocket PC equipped with popular features and operating with Microsoft® Pocket PC Version 3.0.11171. If your make and model Pocket PC meets the minimum requirements stated below, it should operate in a manner similar to that described in these manuals and guides, but may not include some features discussed in the applications guide. Many Pocket PC features described in this guide are **not** essential to operation of the cf Que and are used primarily as convenient alternate methods of operation.

It is also important that you understand the operation of your Pocket PC prior to using the Garmin cf Que. The operation of the Garmin cf Que application requires understanding of standard procedures used for the Pocket PC that are not discussed in detail in the cf Que Applications Guide. If you purchased your Pocket PC at the same time as the Garmin cf Que and are **not** yet familiar with its operation, it is strongly recommended that you learn how to operate the Pocket PC first.

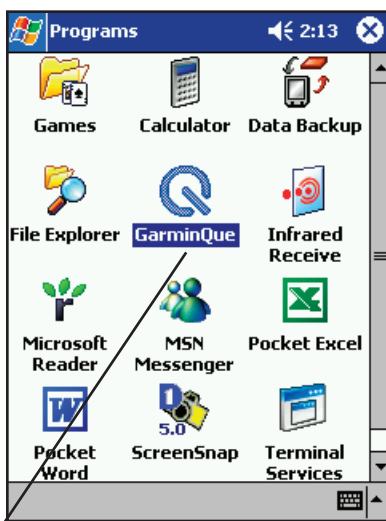
Minimum Pocket PC requirements for cf Que 1620

Pocket PC, Pocket PC 2002, or Pocket PC 2003 operating system, CompactFlash Type I or II slot, 16 MB program memory.

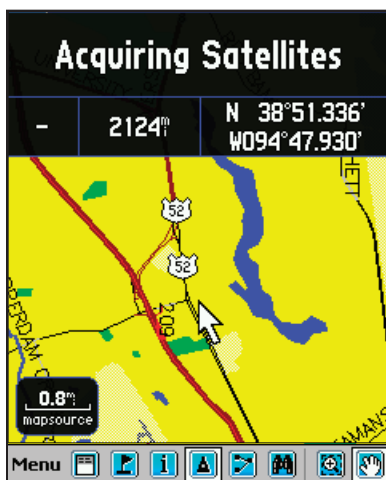
cf Que™ 1620

GPS Applications

Start Up

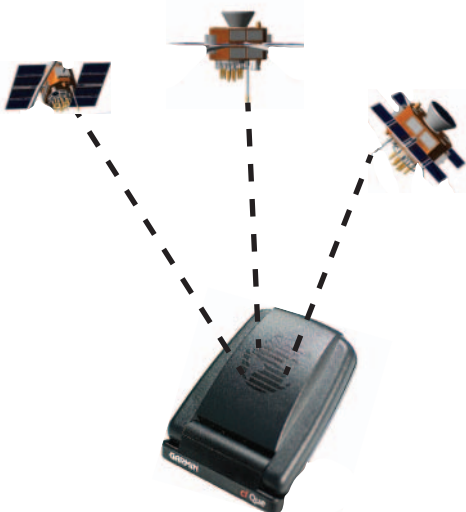


Tap to open the Application




Map Page

Initializing the GPS Receiver



Starting Up the cf Que 1620

If you followed the Setup instructions provided with the cf Que 1620, then both the cf Que receiver and Garmin Que application software have been successfully installed in the Pocket PC. To start operation, turn on your device and tap **Start** to display the Start Menu, then tap **Programs** to display the Programs List with the Garmin Que icon. Tap the **Garmin Que** icon  to display an introduction page and then the Map Page and you're on your way to navigating.

Helpful Hint: To shorten the process of restoring the Que application to visible status, open Settings and the Menus application on the Personal page. From the Menu page place a check next to Garmin Que to place it on the Start List.

It is important to remember that the cf Que GPS receiver will continue to operate when the application is not visible. This can contribute to depletion of reserve battery power. Some Pocket PC devices continue to supply power to the CF slot when the PDA is turned off. To prevent accidental battery drain, it is recommended the you remove the cf Que from the slot when the Garmin Que application is not in use.

The methods for closing the Que application are to tap "Exit" from the Map Page Main Menu, or from any application, tap Start, then Settings, and finally Memory and tab to a list of Running Programs. Tap "Garmin Que" and then the **Stop** button.

Viewing the Map Page

The Map Page is the base for accessing all of the Que navigation features. A message window at the top of this page keeps you informed of the status of the GPS receiver. When the cf Que GPS receiver is not installed the Map Page will display a "No GPS Connected" message.

When the receiver is installed in the CompactFlash slot, the Map Page will then display a "Waiting for GPS" message until the application connects with the receiver. Once connected an "Acquiring Satellites" message appears until GPS Location is achieved.

To return to the Map Page from any other Que feature page or option, tap **OK**.

Initializing the GPS Receiver

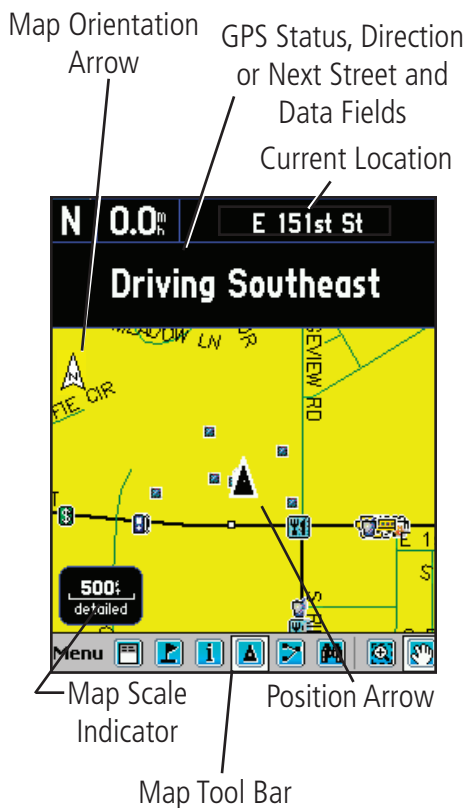
The GPS Receiver (the cf Que device) must be initialized (given an opportunity to determine its location) before you can begin using it for navigation. Before it can receive signals from GPS satellites overhead, you must turn the receiver on and deploy the antenna on the cf Que™ by positioning it parallel with the horizon for best satellite reception. In order to receive satellite signals, you must be outdoors and have a clear view of the sky. Satellite signals cannot pass through solid materials (except glass) or dense overhead tree cover. When the cf Que initializes for the first time it may take as long as 15 minutes. This time can be shortened by using the GPS Info Page to select the general area in which you are currently located (see page 20). Anytime you have traveled more than 600 miles with the GPS receiver turned off, the cf Que must again find its location by re-initializing.

If for any reason, you have difficulty initializing your cf Que, refer to the Troubleshooting Guide on page 38, the solution could be as simple as moving slightly to avoid buildings or objects that are blocking or deflecting satellite signals.

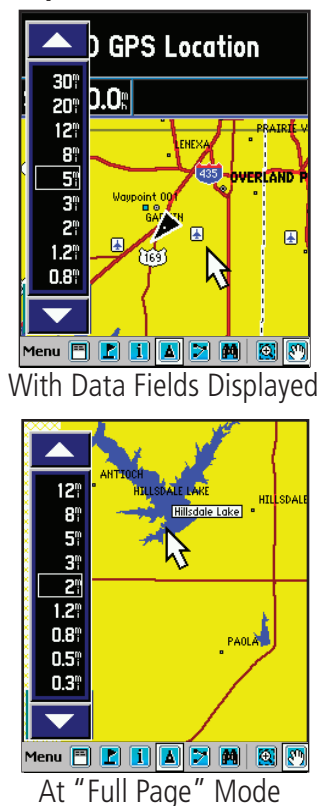
cf Que™ 1620

GPS Applications

The Map Page



Map Scale Control Panel



Using the Map Page

The Map Page is the primary navigation feature of the Que application. From this page you can observe a triangular arrow that indicates your current location and direction of travel. As you move, this "Position Arrow" moves with you, turning when you turn and stopping when you stop.

The Map Page displays a detailed map of the area surrounding your current location. It allows you pan the map with the stylus as well as view your progress when navigating. When in the "Track Up" mode (oriented in the direction of travel), a north reference arrow appears at the top left corner to orient the map. When you activate the Track Log feature, your path of movement is indicated by a dotted line.

Use the Map Page to:

- Determine your current location
- View your progress while moving
- Locate and navigate to nearby map items
- Follow a route line when navigating
- Access other navigation features using the Main Menu.
- Mark your current location or a map point as a waypoint

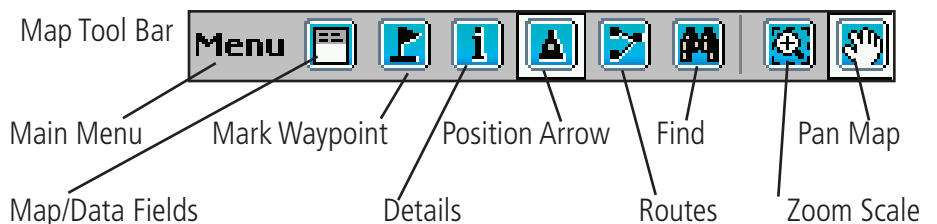
To use the Map Page:

1. Tap **Start** to open the Main Menu and then tap **Programs**.
2. Select **Garmin Que** to display the Map Page.

When first accessing the Map Page it will take a few moments for the GPS Receiver to locate satellites overhead before it determines your location. While this takes place, an "Acquiring Satellites" message will display at the top of the page.

When your location has been determined, a "3D GPS Location" message replaces the original message. After you begin moving, it changes to display the next street ahead and you can also determine your direction of travel, speed and current location by observing the data fields below the message.

At the base of the page is the Map Tool Bar with the Main Menu, and icons for Waypoint Marker, Position Arrow, Details, Map/Data Fields option, Find Menu, Route, Zoom Map Scale and Pan Map. Tap and hold to display their function.



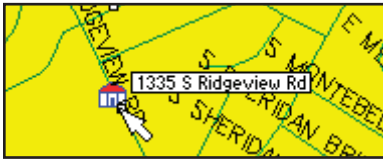
To change the map scale in increments, tapping the map scale at the lower left side of the map displays the map scale control panel. A scale bar is displayed with Zoom In and Out Arrows at the top and bottom. Tapping the Up Arrow moves to scales which show less map detail but more map area and the Down Arrow moves to scales which increase the detail but show less map area. Tapping a desired scale changes the map to that scale and closes the panel.

Tapping the Map/Data Fields icon allows you to view the Map Page in three modes, Full Map, Large Map with small Data Fields, Smaller Map with larger Data Fields.

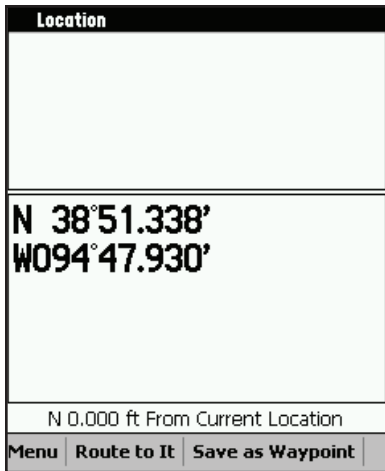
cf Que™ 1620

GPS Applications

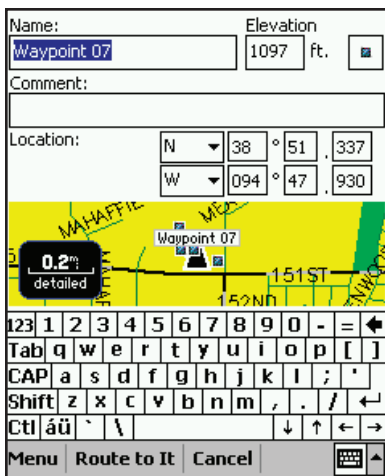
The Map Page



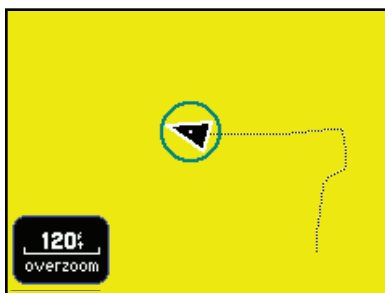
Map Pointer and Item Description



Information Page with Lat/Lon Coordinates



New Waypoint Page



Accuracy Circle and Track

The Map Page also displays detailed geographic information such as highways and roads, lakes and rivers, cities, waypoints and residential streets, depending on the detail of map data being used. Detailed maps can be loaded from map data CD's using MapSource as explained on page 34 of this guide.

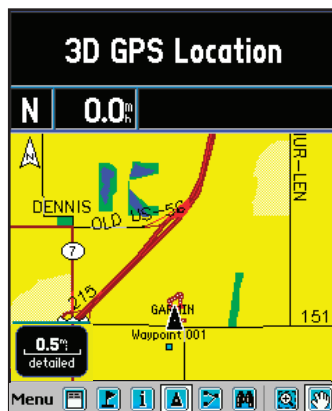
There are two map orientation options: North Up and Track Up. North Up orients the map like a paper map, while Track Up orients the map in the direction of travel and can be set to display only below a desired map scale. As you travel to the edge of the display, the map moves (redraws) to constantly show your current location.

When the "Pan Map with Stylus" mode is selected, dragging the stylus across the screen causes the map to pan with the movement of the stylus. This allows you view portions of the map surrounding your current location helping you to locate nearby cities, lakes or other geographical features. When this feature is not active, the "Zoom Scale" feature is in place which allows you to drag the stylus across a desired portion of the map, creating a rectangular box to zoom in on details.

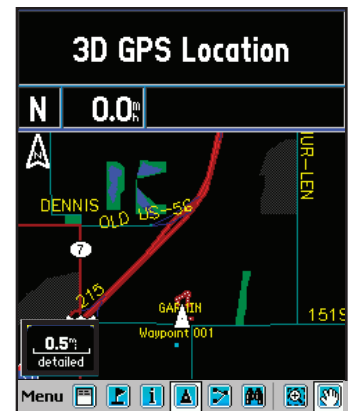
Tapping the Details icon on the tool bar displays the Details Page with either an address description or latitude and longitude coordinates for your current location or a map point defined by the Map Pointer.

Tapping the stylus on the map places the Map Pointer on any selected location on the map. If that location is supported by detailed mapping data, a description (name or address) will display (briefly). Any location on the map, marked by the Map Pointer, can be saved as a waypoint by tapping the Waypoint Marker Flag or the Information Page icon in the map tool bar. (More on waypoints on page 18.) To remove the Map Pointer, tap the Position Arrow icon on the tool bar or on the map and re-center the Position Arrow. When the Arrow is centered on the page, the icon is highlighted.

The map color can be set to automatically compensate for the difference in day and night lighting conditions to improve readability of the map. Switching from day to night mode reduces the amount of night glare produced by the screen when mounted on a vehicle dash. See Map Setup preferences on page 7.



Map Color - Day Mode



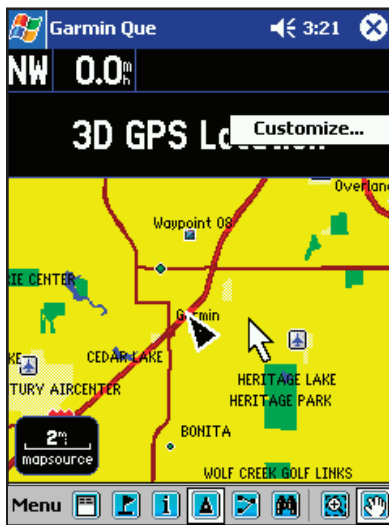
Map Color - Night Mode

When you zoom in from 500 feet on down and the Position Arrow isn't matched to a road on the map, an Accuracy Circle appears around the Position Arrow. The circle represents the area in which you are located. The diameter of the circle will vary in size depending on the number and geometry of overhead satellites. When zoomed in with the Track Log recording, you may also see many small track lines criss crossing in and out of the circle as the cf Que adjusts its location.

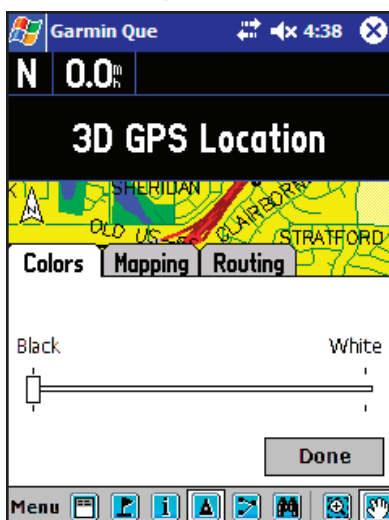
cf Que™ 1620

GPS Applications

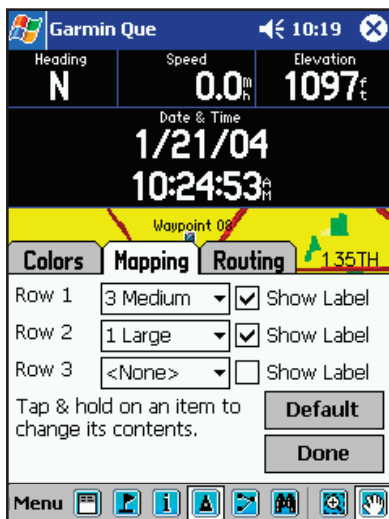
The Map Page



Customizing Map Data Fields



Data Field Color Adjustment



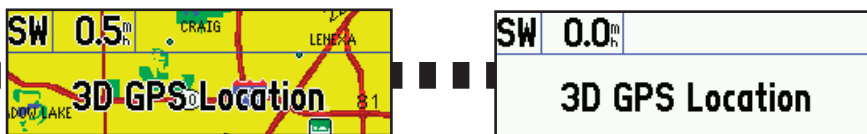
Mapping Data Field Setup

Setting Up the Map Page Data Fields

The Garmin Que software allows you to customize the display of Map Page Data Fields. You can customize the background and text colors from black to white or create a transparent background to increase the amount of map area displayed along with overlaying mapping and routing data. You can customize the way in which data fields are displayed by selecting the number of fields, the size and add descriptive labels.

To set the background for the Data Fields:

1. Tap and Hold anywhere on a data field to display the "Customize" window, then tap the window to display the tabbed Setup Menu.
2. With the Background Tab active, select from Black, Transparent, or White to change the background of the data fields. Tap and drag the slider to your selection. Stopping at the center or the slider selects the Transparent background.
3. If you don't want to change the information or arrangement of the data fields for mapping or routing, tap **Done** to close the Setup Menu.



Black Background

Transparent Background

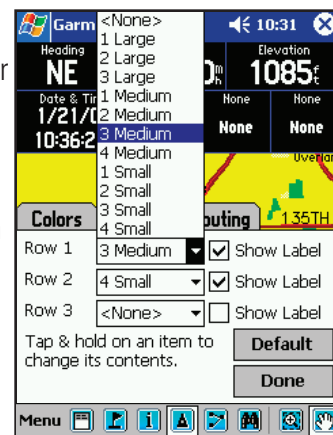
White Background

Setting the display of the Mapping Data Fields

When you are using the Map Page and not navigating a Route, the Data Fields can be setup to display only data useful for navigation using the Map Page.

To determine the arrangement of the Data Fields:

1. Tap and Hold anywhere on a data field to display the "Customize" window, then tap the window to display the tabbed Setup Menu.
2. Tap the Mapping Tab to display the Setup Menu.
3. Tap the field next to each row number to display the list of setup options. The number refers to the number of fields in the row and "Large", "Medium", and "Small" refer to the text size.
4. Tap the "Show Label" box if you want each data field to have a descriptive label above the data. This is a good selection if choosing to display several fields that use similar units of measurement (i.e., Speed and Maximum Speed).
5. Repeat these steps for each row of data.

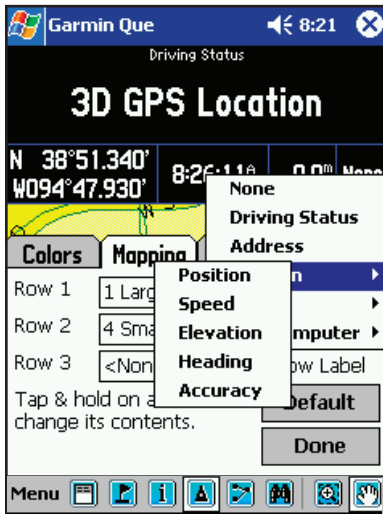


Data Field Row Options

cf Que™ 1620

GPS Applications

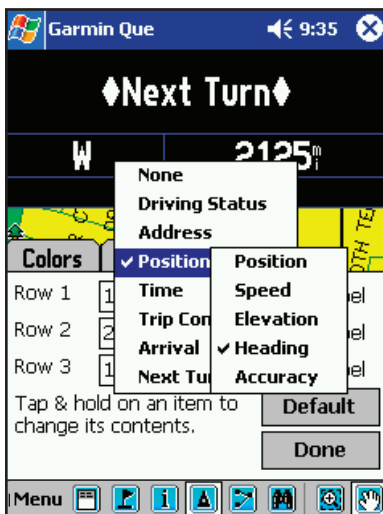
The Map Page



Mapping Data Field Options



Routing Data Field Setup



Routing Data Field Options

To determine what data to display in each Data Field:

1. With the Data Fields Options Menu displayed and the Mapping tab selected, tap and hold the stylus on the data field you want to change.
2. Tap the desired subject from the Data Field Options list to select it or to display a subtopic list for that subject. "Position", "Time" and "Trip Computer" display subtopic lists when tapped.
3. Tap the desired option to change the data field and close the list.
4. Repeat this process for each data field you want to change.
5. Tap **Done** to close.

Setting the display of the Routing Data Fields

When you are navigating a Route, the Data Fields can be setup to display useful information for route navigation. When actively navigating a route, the mapping data fields will change to display routing data fields. If the same subject has been chosen for both mapping and routing it will be displayed in both modes but not necessarily in the same field location.

To determine the arrangement of the Data Fields:

1. Tap and Hold anywhere on a data field to display the "Customize" window, then tap the window to display the tabbed Setup Menu.
2. Tap the Routing Tab to display the Setup Menu.
3. Follow steps 3 through 5 of the instructions for setting up Mapping Data Fields as explained on the previous page.

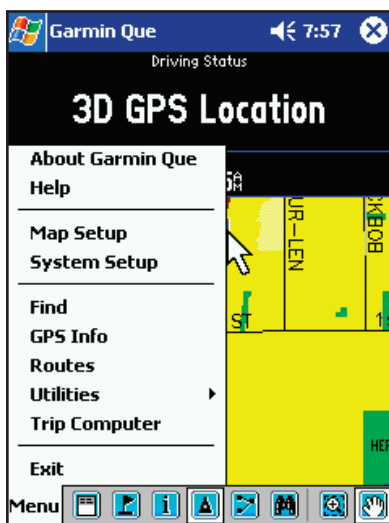
To determine what data to display in each Data Field:

1. With the Data Fields Options Menu displayed and the Routing tab selected, tap and hold the stylus on the data field you want to change to display list of data options.
2. Tap the desired subject from the Data Field Options list to select it or to display a subtopic list for that subject. Data subjects with sub-topic lists can be identified by the small black arrow point to its right.
3. Tap the desired option to change the data field and close the list.
4. Repeat this process for each data field you want to change. If you want data that is displayed on the Map Page to display while you are navigating a route, you must select it for the Routing Data Fields.
5. Tap **Done** to close.

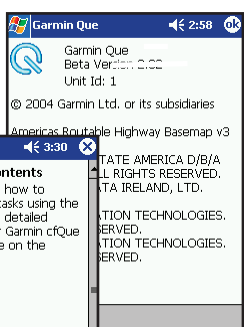
cf Que™ 1620

GPS Applications

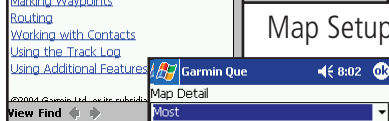
The Main Menu



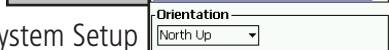
About
Garmin Que
Help



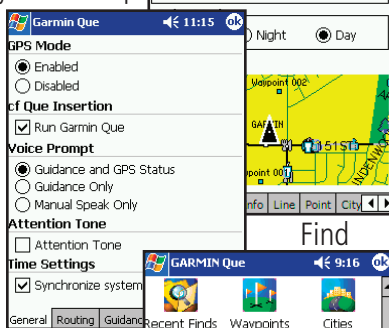
Help
System Setup



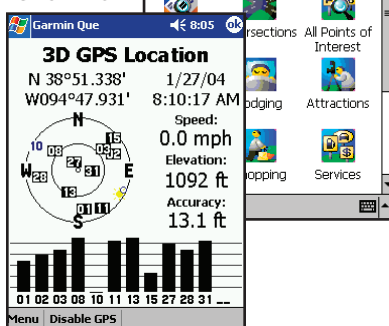
Map Setup



System Setup



GPS Info



Using the Main Menu

The Map Page Main Menu is the starting point for accessing all of the Garmin Que application features. Using the Main Menu you can access Que Help, Map Display Setup, make System Settings, use the Find feature, monitor GPS status from the Satellite Page, manage a Route, record a Track Log, and observe the Trip Computer.

Here is a brief description of each of the Main Menu topics:

About Garmin Que - This page contains the application software version, Unit ID, and Garmin copyright notices.

Help - This help file provides information about the Garmin Que application operation.

Map Setup - The feature allows you to customize the way the maps display on your device. There are factory default settings that make your application functional, so you won't need to perform a setup initially. For a detailed description about map setup see page 7.

System Setup - This feature allows you to select and adjust system operating features to meet your personal requirements. Factory default settings currently operate the application. For instructions on using System Setup, see page 10.

Find - This feature provides you with lists by category of locations contained in the detailed map and basemap data stored in your device and on the Flash and SD cards. For instructions on using the Find Feature, see page 12.

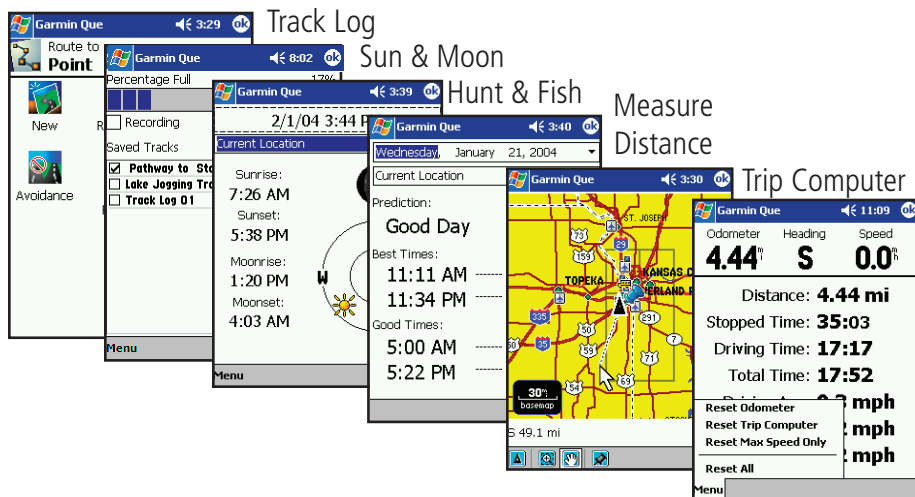
GPS Info - This page provides current status information about the GPS receiver and satellites overhead. For more information about this page, see page 20.

Route - This feature is used to manage and modify a route after a destination has been selected. See page 24 for detailed instructions.

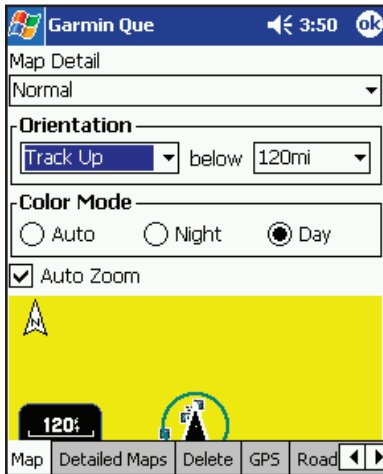
Utilities - This topic is divided into four sub-topics: Track Log, Sun and Moon, Hunt and Fish and Measure Distance. For detailed instructions for recording and saving tracks, see page 28. For information about using the Sun and Moon and Hunt and Fish Tables, see page 29. Details about measuring distance are contained on page 30.

Trip Computer - The Trip Computer displays current information about your travel status. For detailed information about the Trip Computer, see page 31.

Routes



Map Setup



Detail, Orientation and Color



Detailed Maps



Delete Maps

Map - Detail, Orientation, Color and Auto Zoom Settings

Tap the **Map Settings** from the Main Menu.

To set the degree of map detail:

1. Tap the Map Detail Field to display the list of options.
2. Select from Least to Most to set the detail and close the list.

To select the map orientation:

1. Tap the Orientation field to display the options.
2. Select **North Up** to orient the map with North at the top (like paper maps). Select **Track Up** to orient the map in the direction of travel and choose the map scale limit for displaying Track Up. Any scale above that limit reverts back to North Up.

To set the Color Mode:

Tap the option desired to place black dot next to it. "Auto" changes from "Day" to "Night" mode automatically, according to the time of day.

To activate Auto Zoom:

Tap **Auto Zoom** to activate this feature which automatically scales the map to display both your current location and the next turn in a route during active navigation.

Detailed Maps

To view the list of detailed map data and select maps for display:

1. Tap the **Detailed Maps** tab from the Map Setup Pages.
2. Tap the desired detailed map to add or remove a check from the activation box. Detailed information for that map will not display if unchecked.

Information at the top of the page is the description of the map set you loaded to Garmin Que using MapSource. To learn how to name map sets, refer to the MapSource User's Manual. The information at the bottom of the page indicates details of the selected map.

3. Tap and hold to enable groups of maps.

Delete Maps

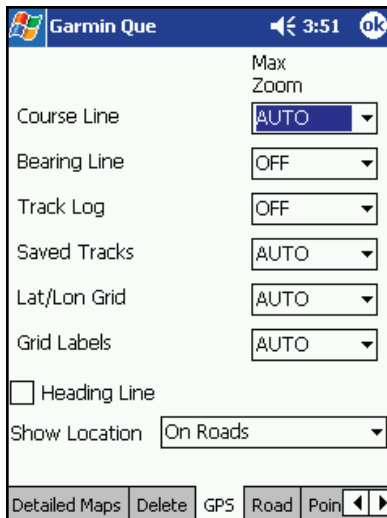
To delete detailed and basemaps from storage locations:

1. Tap the **Delete** tab from the Map Setup Pages.
2. Tap the map you want to delete from the list to select it.
3. Tap the **Delete** button and follow the Yes/No prompt that follows.

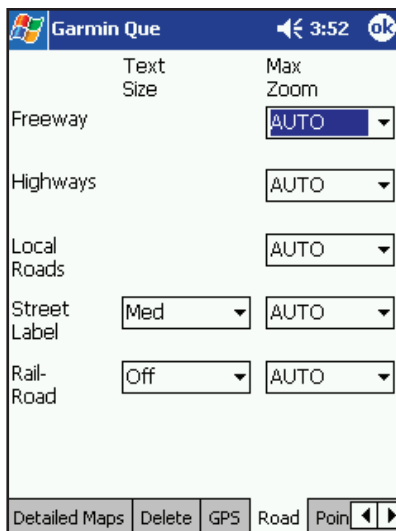
cf Que™ 1620

GPS Applications

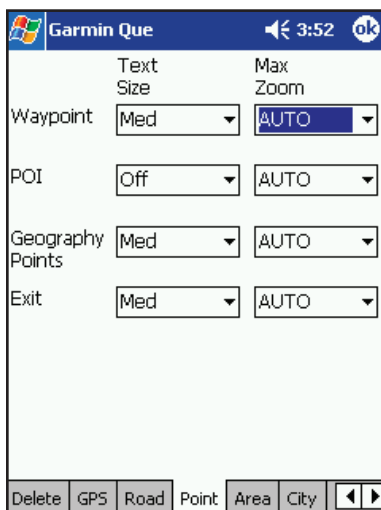
Map Setup



Map GPS Settings



Map Road Settings



Map Point Settings

GPS Settings

To set the Maximum Zoom level for Course Line, Bearing Line, Track Log, Saved Tracks, Lat/Lon Grid and Grid Labels:

1. For Maximum Zoom select from "OFF", "AUTO", or an increment from a scale of 120 feet to 800 miles.
2. Repeat for each listed map feature.

Road Detail Settings

To set the Text Size for Track Logs, Railroads and Street Labels:

1. Tap the **Road** tab from the Map Setup Pages.
2. Select from "Off", "Small", "Medium" and "Large" options for display of each listed map feature.

To set the Maximum Zoom:

1. For Maximum Zoom select from "OFF", "AUTO", or from an incremental scale of 120 feet to 800 miles.
2. Repeat for each listed map feature.

Map Point Settings

To set the Text Size for Waypoints, Interstate Exits, and Points of Interest:

1. Tap the **Point** tab from the Map Setup Pages.
2. Select the text size for each type of map item.

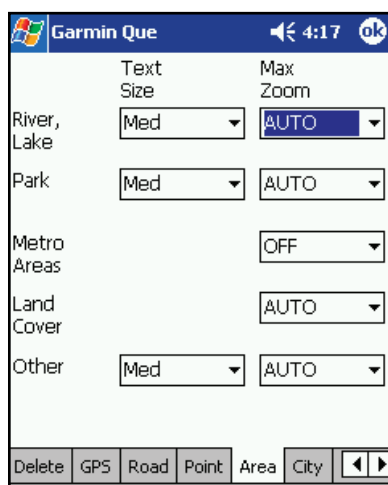
To set the Maximum Zoom level:

1. For Maximum Zoom select from "OFF", "AUTO", or from an incremental scale of 120 feet to 800 miles.
2. Repeat for each listed map feature.

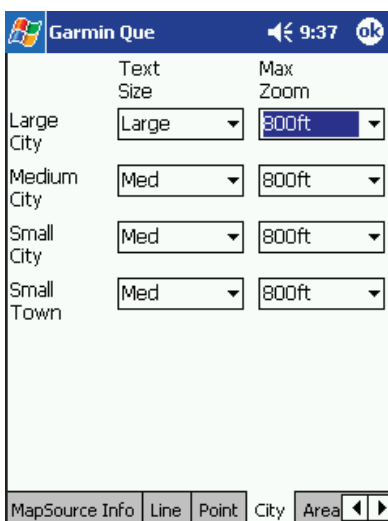
cf Que™ 1620

GPS Applications

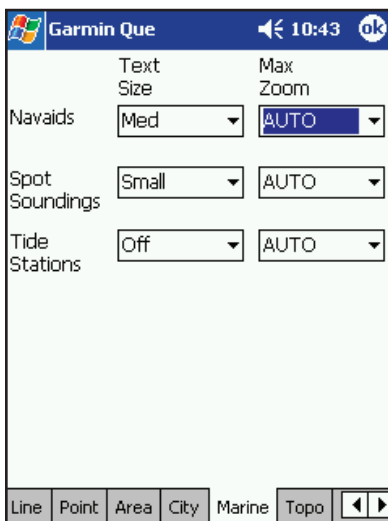
Map Setup



Area Feature Settings



City Settings



Marine Settings

Area Settings

To set the Text Size for Waypoints, Interstate Exits, and Points of Interest:

1. Tap the **Area** tab from the Map Setup Pages.
2. Select the text size for each type of map item.

To set the Maximum Zoom level:

1. For Maximum Zoom select from "OFF", "AUTO", or an increment from a scale of 120 feet to 800 miles.

City Settings

To set the Text Size for Large, Medium and Small Cities, plus Small Towns:

1. Tap the **City** tab from the Map Setup Pages.
2. Select the text size for each type of map item.

To set the Maximum Zoom level:

1. For Maximum Zoom select from "OFF", "AUTO", or an increment from a scale of 120 feet to 800 miles.
2. Repeat for each listed map feature. It may be helpful to use a different text size for the three types of cities to help determine their size when observing the map.

Marine Settings

To set the Text Size for Nav aids, Spot Soundings, and Tide Stations:

1. Tap the **Marine** tab from the Map Setup Pages.
2. Select the text size for each type of map item.

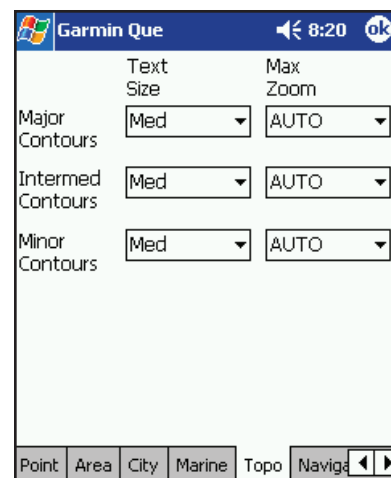
To set the Maximum Zoom level:

1. For Maximum Zoom select from "OFF", "AUTO", or an increment from a scale of 120 feet to 800 miles.

Topographic Settings

To set the Text Size for Major, Intermediate and Minor Contours:

1. Tap the **Topo** tab from the Map Setup Pages.
2. Select the text size for each type of map item.

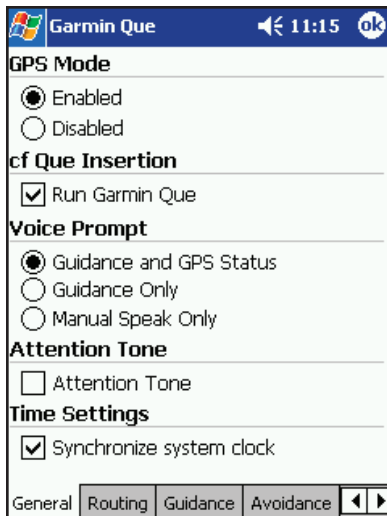


Topo Settings

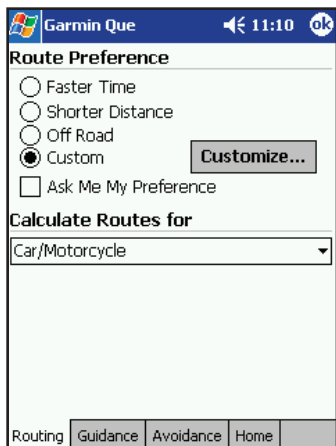
cf Que™ 1620

GPS Applications

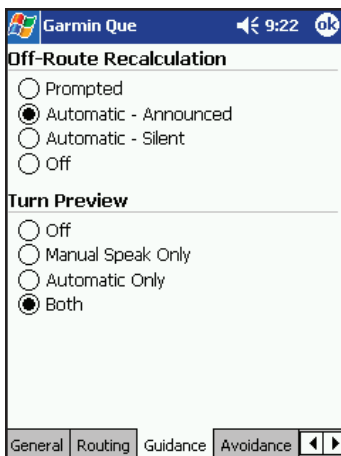
System Setup



General Settings Page



Routing Settings Page



Guidance Settings Page

Setting Up the Que System

Although your Garmin Que software will function perfectly well using the factory default settings, you will want to customize its operation to meet your personal requirements. The System Setup consists of a series of seven tabbed pages with operating options for the system features.

General Settings

To set the GPS receiver Operating Mode:

1. Tap System Setup from the Main Menu to display the first page.
2. Choose from two operating modes "Enabled" and "Disabled".

To run Garmin Que on cf Que insertion:

1. Tap "Run Garmin Que" to place a check mark in the adjacent box and automatically start up the Garmin Que application whenever you insert the cf Que into the Pocket PC.

To set Voice Prompts:

1. To receive voice messages about upcoming turns in a route and updates on the status of the GPS signal reception select "Guidance and Status".
2. To receive direction voice prompts only, select "Route Guidance".
3. To receive guidance only when desired by pressing a hard button mapped to the "Speak Next Instruction" option from the Buttons setup, select "Speak Button Only". See page 33 for instructions on mapping hard buttons.

To Activate/Deactivate the Attention Tone:

1. To hear a tone prior to when a message is displayed on the device screen or a voice prompt, tap **Attention Tone** to place a check mark in the adjacent box.

To synchronize the time and date with the GPS Receiver:

1. Tap "Synchronize system clock" to place a check mark in the adjacent box. When checked, this will sync the device clock to GPS time each time the cf Que is turned on.

Routing Settings

To set Routing preferences:

Refer to page 24 for detailed instructions.

Guidance Settings

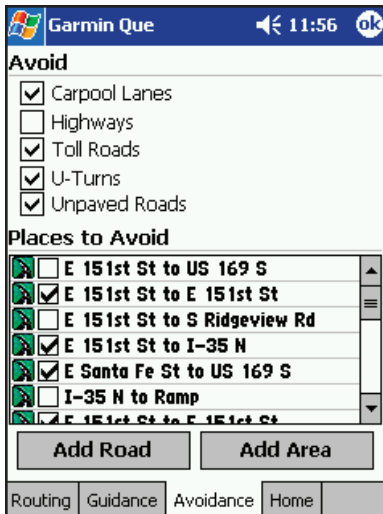
To set route Guidance preferences:

Refer to page 24 for detailed instructions.

cf Que™ 1620

GPS Applications

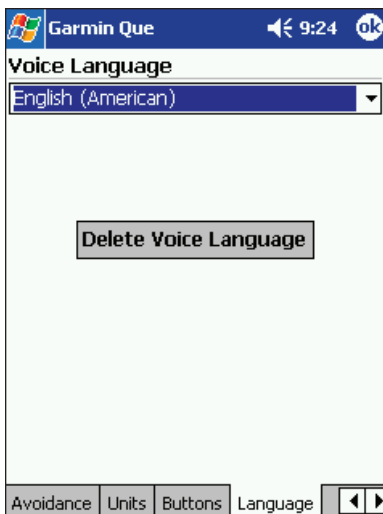
System Setup



Avoid Roads/Areas Page



Units Settings Page



Language Selection Page

Avoidance Settings

You can select specific sections of roads and define areas to avoid when calculating a route. This helps you to avoid road construction, heavy traffic areas, etc.

To select roads and areas to avoid:

Refer to page 25 for detailed instructions.

Units Settings

You can choose a unit of measure for Distance and Speed, Direction, Elevation and Depth.

To set the Units of Measure:

1. Tap the desired unit of measure for each type of measurement shown.

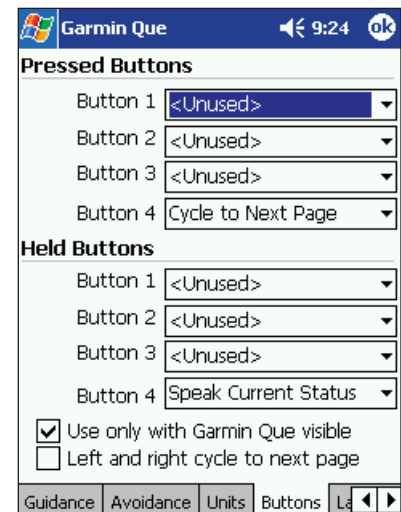
Buttons Settings

You can select hard buttons on the unit to perform specific Que Application functions.

To map system features to device hard buttons:

Refer to page 33 for detailed instructions.

Buttons Mapping Page

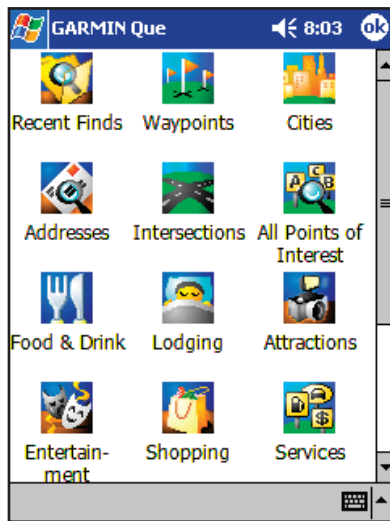


Language Settings

You can choose a specific language for voice messages and prompts. The available languages are displayed on a drop-down menu.

To select a language for Voice:

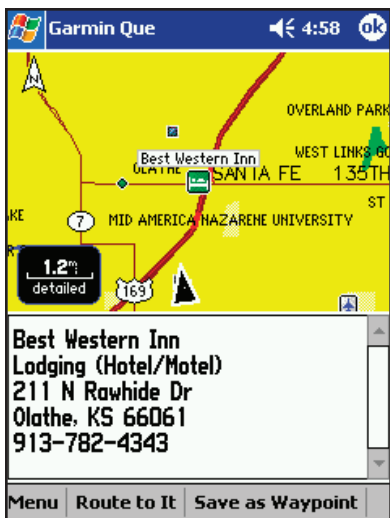
1. Tap the language field to display the list of available languages.
2. Tap the desired language to both select the language and close the list.
3. To remove a language from the list, tap the "Delete Voice Language" button with the language highlighted on the list.



Find Menu



Item Options Menu



Find Item Details Page

Using the Find Feature to search for a Destination

The Find feature allows you to search for any map data item and create a route to it. All Find items are part of the basemap and detailed mapping data downloads.

To access the Find Menu:

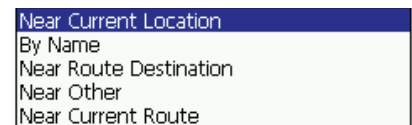
1. From the Map Page, tap the **Find** icon (binoculars) on the Map Page Tool bar. Or... tap **Menu** and select it from the list of topics.
2. The Find Menu has icon type buttons for seventeen major categories of geographic locations for such map items as cities, street addresses, points of interest and more.

Many of these categories have subcategories; e.g.. Food and Drink (Restaurants) will list types like barbecue, Chinese, Italian, etc. Restaurant chains with more than one location near you display a list of those in the area when you select the details option.

If you have already used the Find Feature to locate items, Recent Finds will display a list of those items. If you have saved any map points or Find category items as waypoints they will appear on the Waypoint category list.

3. Tap the Find category of your choice to display the list of items for that category. The page displays with a category title field. Tapping that field displays the complete list of categories that can be accessed by tapping the item.

To refine your search for a location, tap the next field to display a list of search options; Near Current Location, Near Map Pointer, By Name, Near Other, and Near a Previously Selected Item.



Find Options Menu

Near Other selects a new item to replace the “Near previously selected item”.

To further refine your search, you can select a sub-category by tapping the All Types field and choose from the list of options.

Finally, to speed selection from the remaining list, use the “Containing” field to enter a word or part of a word in the title of the item you are searching for. All items with that word in their title are then displayed on the list.

4. Once you have identified the item you are searching for, place the stylus on it and hold to display a list of options for that item.

The first option is to view the Details Page for that item. This page shows the location of the item in relation to your current location. Below the map is a description of the item and address and phone number (if available). At the bottom of the page is a Route button to create a route to the item.

The second option is to create a route without moving to the Details page.

The third option is to Find other map items near the selected item. Once selected the item will appear on the options list for all Find categories. It will remain as an option until you select another map item to replace it.

The fourth option is to save the item as a waypoint on the Waypoints List. Tapping the ‘Save As Waypoint’ icon with the item highlighted will also allow you to save the item as a waypoint. The last option is ‘Add to Contacts’. Any Find item with a name and address can be added to the Contacts list.

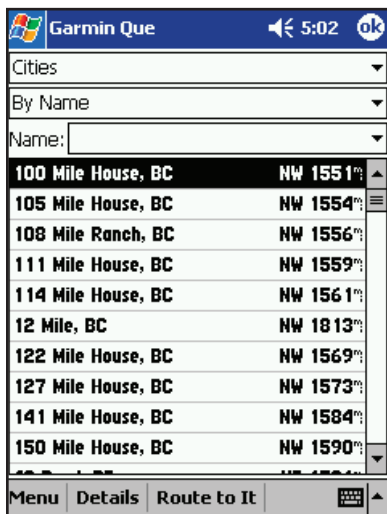
cf Que™ 1620

GPS Applications

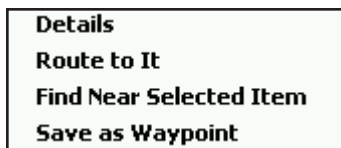
The Find Feature



Cities



List of Cities By Name



Drop-Down Item Options Menu



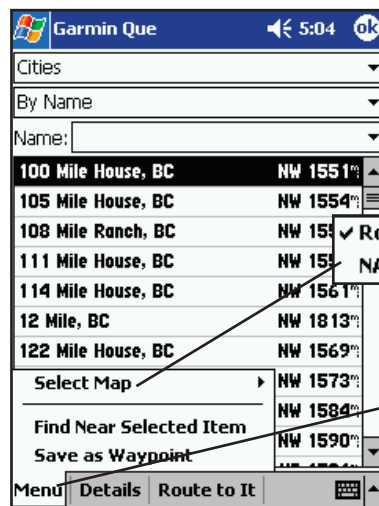
City Details Page

Searching for Cities

The Find feature allows you to search for a city and create a route to it. The cities listed are part of the basemap and detailed mapping data downloads.

To select a city from the Cities List:

1. From the Map Page, select Find from the Main Menu or tap the tool bar Find (Binoculars) icon to display the Find Menu.
2. Tap the Cities icon to display the list of cities. Use the Find Options Menu, as explained on page 12, to refine your search.
3. If you select "By Name", you can further refine your search, when you enter the first few letter of the city in the Name Field. As you add more letters, the list of cities will change to display as many matches as possible.
4. Highlight a city from the list.
5. Then either place the stylus on the city until the drop down four option menu appears or tap **Menu** to display a five option menu.
6. Tap **Details** to view the Details Page which displays the city on the map and provides a brief description below the map. Tap the **Route To It** button to create a route to the city from your current location.
7. To create a route without first viewing the Details Page, tap **Route To It** from the drop down menu.
8. To search for other map items near this city, tap **Find Near Selected Item** from the drop down menu.
9. To add the item to the Waypoints List, tap **Save as Waypoint**.
10. If you opened the Menu at the bottom of the page, the only additional option is **Select Map**. Tap this to select from the routable base map or downloaded detail maps from which to base your search for a city.
11. Two other quick options are the **Information** and **Route** buttons at the bottom of the page.
12. Once you have selected "Route To It", follow on-screen instructions and refer to route management information on page 23.



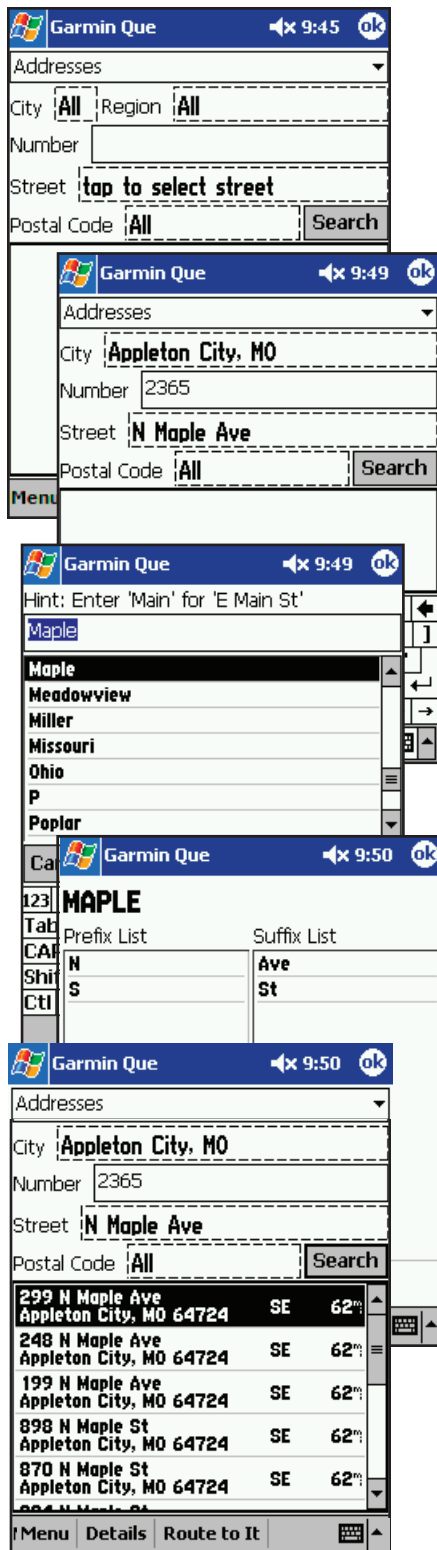
Map Options

Main Menu and Tool Bar

The Find Feature



Addresses



Searching for an Address

The Find feature allows you to search for an address and create a route to it. When you enter an address, the Find feature matches it with those contained in the basemap and detailed mapping data downloads. If the exact address you entered isn't in the database, then it presents the closest matches to that address. If there is no data to support your entry, a "None Found" message appears.

To find an address:

1. From the Map Page, select Find from the Main Menu or tap the tool bar Find (Binoculars) icon to display the Find Menu.
2. Tap the **Addresses** icon to display the Address Entry Page. You will observe data entry fields for City, Region, Street Number, Street and Postal Code.
3. Tap the Region field first. This will display all states and provinces available in the mapping data you have installed. Select a state or province.
4. Next tap the City field to display a list of cities in the selected state or province. Select a city. If you tap the City field first, the Region field will be hidden.
5. Enter the street address next.
6. Tap the Street field to display the Street Name dialog page. Enter the first few letters of the street name in the Name field. You need not insert North, East, Avenue, Street, etc. at the beginning or end of the street name.
7. When the desired street name appears in the list below the name field, tap it to place it in the field. The tap the Prefix/Suffix button to display the Prefix and Suffix List for streets in that city.
8. Select the desired prefix and suffix and then tap **OK** to return to the Address Page.
9. Enter the postal code in the remaining field if desired, otherwise it may not be needed to find the address.
10. Finally, tap the Search button to begin the search for matches to the address in the map database. A list of matches appears in the lower part of the screen. Highlight the desired address and then tap the **Menu, Details or Route to It** button on the bottom of the page to Select a Map, Find Near Selected Item, Save as Waypoint, Add to Contacts, view the address from the Details Page or Route To It immediately.



Address Details Page

cf Que™ 1620

GPS Applications

The Find Feature



Intersections

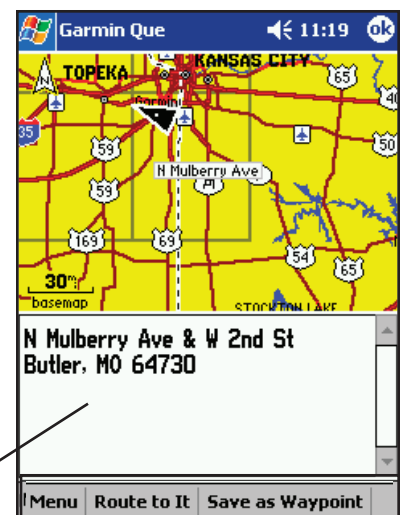


Searching for an Intersection

The Find feature allows you to search for an intersection and create a route to it. When you enter two street names to create an intersection, the Find feature matches it with those contained in the basemap and detailed mapping data downloads. If the intersection you entered isn't in the database, then it presents the closest matches to that intersection. If there is no data to support your entry, a "None Found" message appears.

To find an intersection:

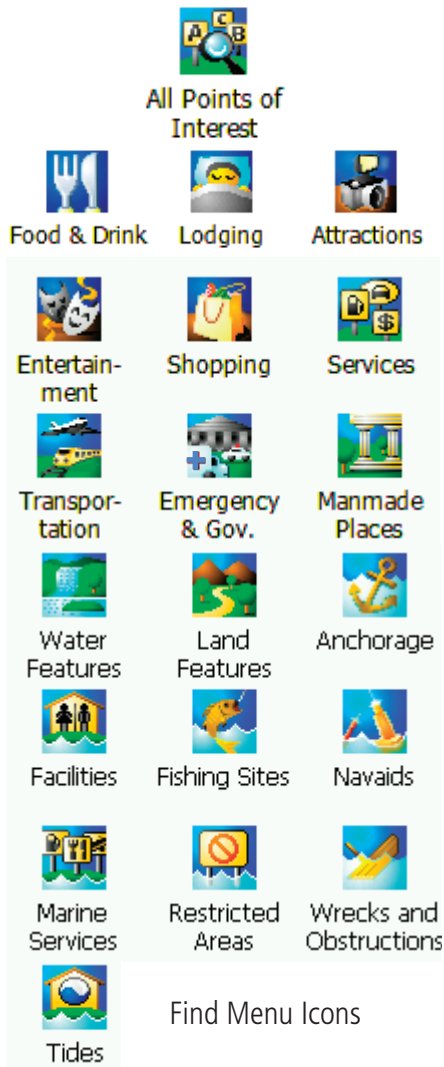
1. From the Map Page, select Find from the Main Menu or tap the tool bar Find (Binoculars) icon to display the Find Menu.
2. Tap the **Intersections** icon to display the Intersection data entry page. You will observe data entry fields for City, Region, Two Streets and Postal Code.
3. Tap the Region field first. This will display several states or provinces near to where the cf Que has established your current location. Select a state or province.
4. Next tap the City field to display a list of cities in the selected state or province. Select a city. If you tap the City field first, the Region field will be hidden.
5. Tap the first Street field to display the Street Name dialog page. Enter the first few letters of the street name in the Name field. You need not insert North, East, Avenue, Street, etc. at the beginning or end of the street name.
6. When the desired street name appears in the list below the name field, tap it to highlight it. Then tap the Prefix/Suffix button to display the Prefix and Suffix List for streets of that name in that city.
7. Select the desired prefix and suffix and then tap **OK** to return to the Address Page with the street name in place in the street field.
8. Repeat this above process for the second street.
9. Enter the postal code in the remaining field if desired, otherwise it may not be needed to find the address.
10. Finally, tap the Search button to begin the search for a match to the intersection in the map database. The match appears in the lower part of the screen.
11. Then tap the **Menu**, the **Details** or **Route** button from the tool bar to either view the intersection from the Details Page or Route To It immediately.



Intersection Details Page

GPS Applications

The Find Feature



Searching for a Point of Interest

Because of the amount of information available in the Points of Interest category is so extensive, it is divided into smaller categories to refine your search for an item.

To find a Point of Interest:

1. From the Map Page, select Find from the Main Menu or tap the tool bar **Find** (Binoculars) icon to display the Find Menu.
 2. Tap the desired category to display the list of items in that category.
 3. If you selected a category with a list, you are given a choice of displaying items by name or only those near your current location. You can further refine your search by selecting a sub-category from the "All-Types" list.
 4. Tap the desired subject to display the refined list of items related to that subject.
 5. With the list displayed, highlight a single Point of Interest item.
 6. When you tap **Details**, an information page displays, showing a location map and detailed information about the item (phone number, address, etc.).
 7. After you have viewed details about a Find item, that item is added to the Recent Finds list to simplify the process for reviewing. To review an item, simply tap the "Recent Finds" icon to display the list.
- Or... You can save it as a Waypoint on the Waypoints List as the Recent Finds list will delete the earliest entries as it runs out of storage space.

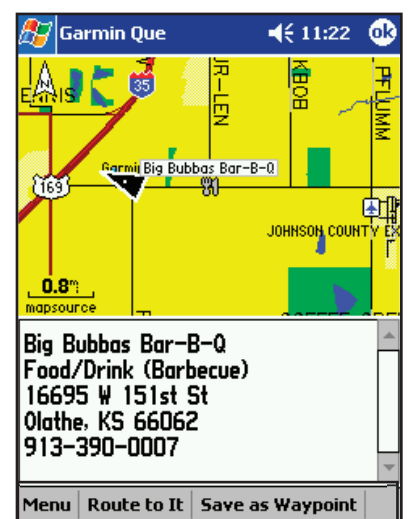
Note: Certain Points of Interest categories list map items only when supported by specific type map data, downloaded from MapSource. Examples these types are Topographic Maps and Marine Charts.



Food and Drink Categories List



List of Items By Category



Detail Page for Selected Item

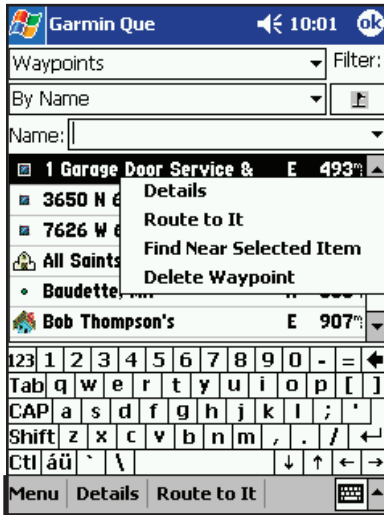
cf Que™ 1620

GPS Applications

The Find Feature



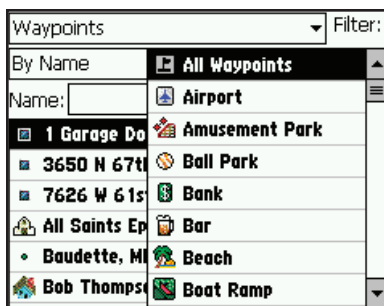
Waypoints



Waypoint Drop Down Menu



Waypoint Options Menu



Waypoint Filter List

Searching for a Waypoint

A waypoint is a geographical location which you have created by marking your current location, tapping a specific point on the map or selecting an item from the Find feature list of map items. Once created, a waypoint can be saved to the Waypoints list of the Find feature.

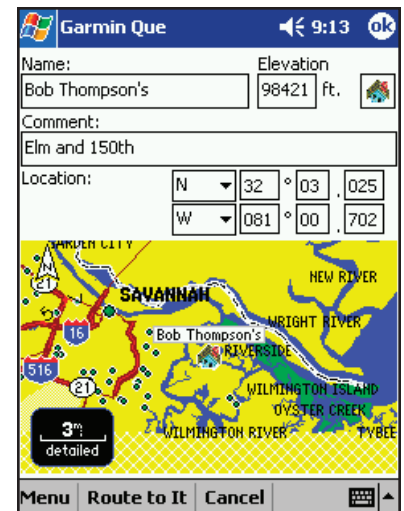
To learn more about creating and saving a location as a waypoint, refer to the section titled, “Creating Waypoints” on page 18.

To find a waypoint:

1. From the Map Page, select Find from the Main Menu or tap the tool bar **Find** (Binoculars) icon to display the Find Menu.
2. Tap the **Waypoints** icon to display the Waypoints List.
3. Highlight a waypoint from the list.
4. Then either place the stylus on the waypoint until the drop down four option menu appears or tap **Menu** to display a five option menu.
5. Tap **Details** to view the Details Page which displays the waypoint on the map and provides a brief description below the map. Tap the **Route To It** button to create a route to the city from your current location.
6. To create a route without first viewing the Details Page, tap **Route To It** from the drop down menu.
7. To search for other map items near this city, tap **Find Near Selected Item** from the drop down menu.
8. To delete the waypoint from the list, tap **Delete Waypoint** from the drop down menu.
9. If you opened the Menu at the bottom of the page, the only additional option is **Delete All Waypoints**. Tap this only if you want to remove every entry from the Waypoints List.
10. Two other quick options are the **Route To It** and **Save as Waypoint** icons on the tool bar at the bottom of the page.
11. Once you have selected “Route To It”, follow on-screen instructions and refer to route management information on page 23.

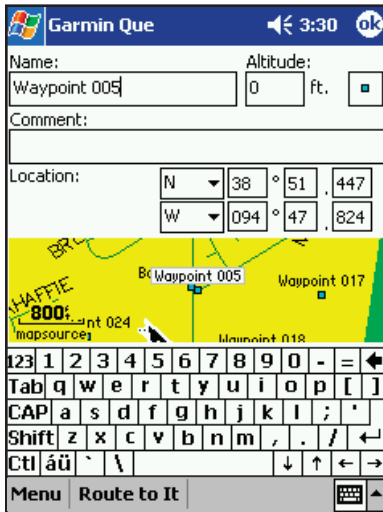
Using the Filter to find a waypoint:

1. Tap the symbol field below the word Filter to help you search large waypoints lists by filtering out those waypoints assigned specific symbols.
2. Scroll through the list of symbols and tap the one for the type of waypoint you are searching for to display list of those type waypoints.

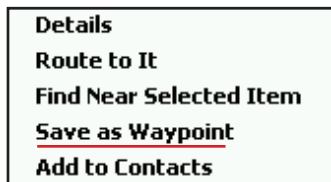


Waypoint Details Page

Creating Waypoints



Mark Waypoint Page



Find Feature
"Save as Waypoint"
Option



A Waypoint as a
Route Destination

Creating a Waypoint

A waypoint can be created three different ways as explained below. All waypoints are accessed from the Find Feature Waypoints List. A Waypoint can be renamed, assigned a graphic symbol, a more accurate altitude, moved to a new location, given new lat/lon coordinates, and provided with special comments. When no longer required, it can be transferred to MapSource for storage or deleted from the Waypoints List.

To mark your current location as a waypoint:

1. From the Map Page, use the stylus to tap the **Waypoint** icon on the tool bar at the bottom of the page.
Be certain the Map Pointer (white arrow) is not displayed, or the location on the map, marked by the arrow will be saved as a waypoint.
2. The "Mark Waypoint Page is displayed with the waypoint automatically named as "Waypoint". (Each subsequently marked waypoint will be named "Waypoint 1, 2, 3", etc.)
3. You can change the name to one more descriptive of the location.
4. Tap **OK** to save the new waypoint to the Waypoints list.

To mark a point on the map as a waypoint:

1. With the Map Page displayed, use the stylus to tap the desired location on the map which causes the Map Pointer (white arrow) to display. If the point on the map has descriptive information in the map database, it displays for six seconds.
2. Once the Map Pointer is at the desired location, tap the **Waypoint** icon on the tool bar to display the Waypoint Details Page.
3. Observe that the waypoint name reflects the data and that the "Comment" field is blank.
4. You may want to rename the waypoint or place a reference in the "Comment" field.
5. Tap **OK** to save the new waypoint to the Waypoints List.

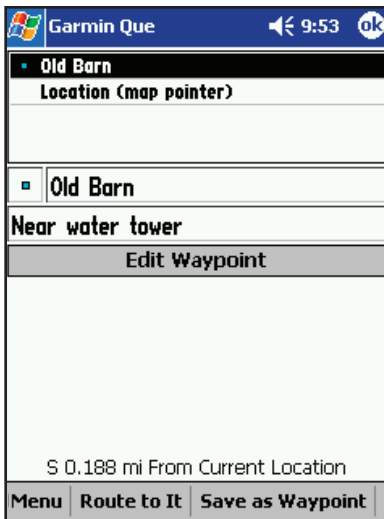
To save a Find Feature item as a waypoint:

1. With the item highlighted, hold the stylus in place until the drop down menu displays. Then tap the "Save As Waypoint" option.

To use a waypoint as a Route destination:

1. From the Waypoints List, highlight the desired waypoint and hold the stylus in place until the options list appears.
2. Then tap "Route To It".
3. From the Map Page with the waypoint displayed on the map. Place the Map Pointer (white arrow) on the waypoint until the description highlights.
4. Tap the **Route** icon to display the Routes Page and then tap the "Route To....." dialog.

Editing Waypoints

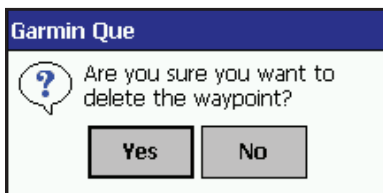
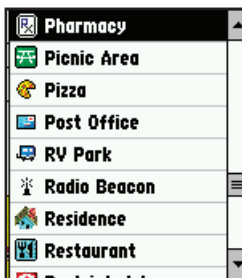


Map Pointer Location Page



Waypoint Details Page

Waypoint
Map
Symbols
List



Delete Waypoint Query

Editing Waypoints

A waypoint can be edited while being created or when you desire to change a previously saved waypoint from the Waypoints List in the Find Feature. You can change the name of the waypoint, assign a specific symbol to display on the map, add information about the waypoint in the form of comments, and delete it from the waypoints list when no longer needed. You can place the Pointer Arrow on a waypoint on the map and tap the Details icon on the tool bar to display a location page. An Edit Waypoint option will take you to the Details Page for that waypoint.

To edit a waypoint name and description:

1. Access the desired Waypoint Details Page.
2. Highlight the Name field and then use text entry to change the name.
3. Highlight the Comment: field to enter a commentary about the waypoint.
4. Tap **OK** to close and return to the Waypoints List.

To adjust the elevation for a waypoint:

1. If know the precise altitude at a waypoint location, you can highlight the **Elevation** field and enter the adjusted altitude.

To assign a map symbol to a waypoint:

1. Adjacent to the Altitude field is a map symbol box . Tap the box to display the Map Symbols List and select the desired symbol for your waypoint.

To change the location of a waypoint:

1. Access the desired Waypoint Details Page from the Waypoints List.
2. Then tap **Menu** to display the list of options.
3. Select **Move** to display a map with the waypoint.
4. Use the stylus to place the Map Pointer at the new location for the waypoint. A dotted line connects the original with the new location.
5. Tap **OK** to complete the move.

If you know the latitude and longitude coordinates for the new waypoint location, you can enter them on the Waypoint Details Page. Highlight the fields for location and enter the new coordinates. Tap **OK** to close and move the waypoint to that precise location.

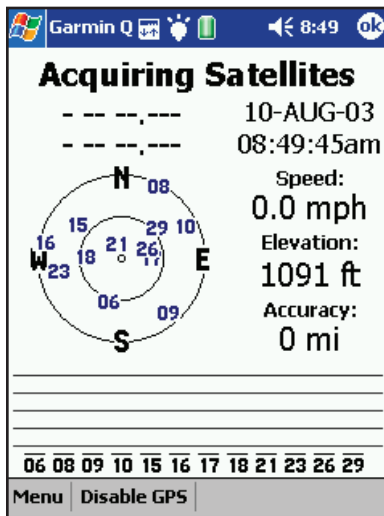
To delete a waypoint:

1. Access the waypoint on the Waypoints List or access the details page.
2. Hold the stylus on the desired waypoint on the list to display the drop-down menu, then select "Delete Waypoint". Or... tap **Delete** from the Details Page Menu.
3. You will be asked, "Are you sure you want to delete the waypoint?". Tap **Yes** to delete and close.

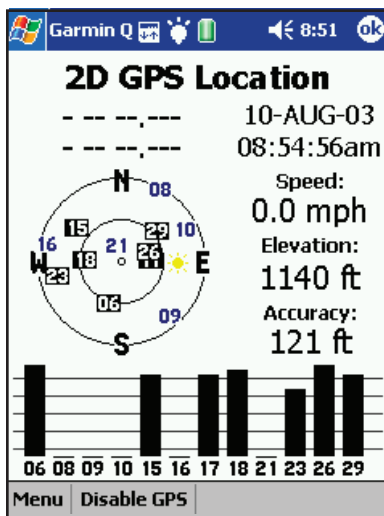
cf Que™ 1620

GPS Applications

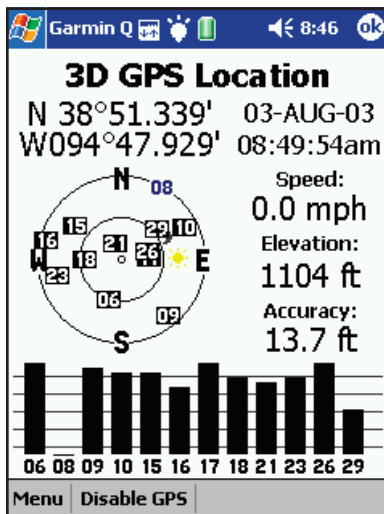
GPS Info



Acquiring Satellites



2 Dimension Position Location



3 Dimension Position Location

Understanding the GPS Info Page

The GPS Receiver must determine its location on the earth by receiving signals from overhead satellites each time it is turned on. The GPS Info Page displays the current status of the GPS receiver.

To view the GPS Info Page:

1. Tap **Start** to display the main menu, tap **Programs** and then **Garmin Que** to display the Map Page.
2. Tap **Menu** on the menu bar at the bottom of the page and then select **GPS Info** to display the Satellite Status Page.

At the top of the Satellite Status Page is a message containing the status of the GPS receiver and a sky view array on the left side representing the position of satellites in the sky overhead with your position in the center of the two circles. The outer circle indicates the horizon while the inner circle a position 45° from the horizon. The numbers displayed indicate the number assigned to those satellites.

A bar graph at the bottom of the page displays the strength of signals being received from each satellite. An “Acquiring Satellites” message is displayed until at least three satellites with sufficient signal strength have been received. When the GPS receiver has determined its location, a “2D” message appears and your location coordinates display at the top of the left hand column.

On the right, the date and time displays along with your approximate elevation, and, if you are moving, your current speed displays as well.

When you have sufficient signals from four or more satellites, a “3D GPS Location” message appears and the approximate elevation also displays at the bottom of the column.

The accuracy of your current position displays at the bottom of the list. All of this information continues to update as you navigate.

Establishing an initial location

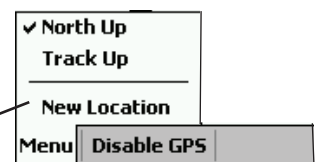
When starting up for the first time, or when you have moved to a new location more than 600 miles from the last one, it will take some time for the cf Que to determine its new location.

To facilitate the initialization process :

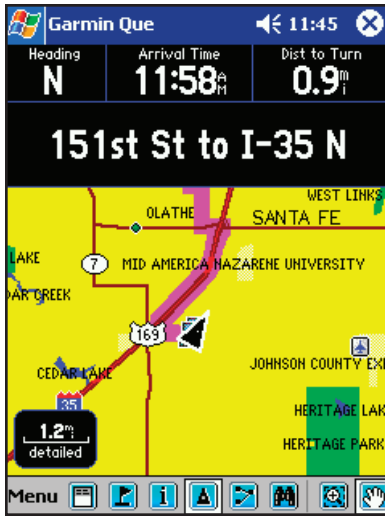
1. Tap **Menu** tab at the bottom of the page to display the “New Location” and “North Up” or “Track Up” options.
2. Tap **New Location** if you want to go to the Map Page and mark your approximate location to help the satellite narrow its search for satellites. Using its built-in almanac of satellite positions, the cf Que looks for signals from only those satellites that are in sight at that location.

The Options Menu also allows you to orient the sky view graphic to “North” or to “Track” in the direction of your movements.

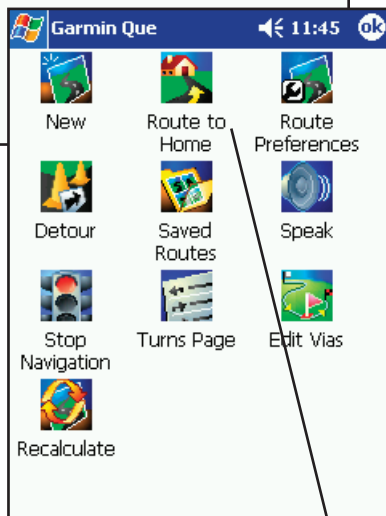
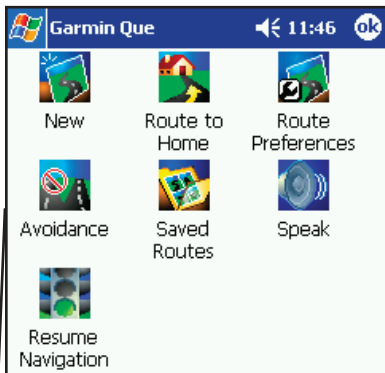
Main Menu Location Option



Routes



Route Highlighted on Map Page



Route Menu
with no Active Route
and with Active Route

Using Routes

The Route feature allows you to navigate to a destination of your choice. You can determine your destination using either the Map Page or the Find Menu. Once a destination is selected, the Route feature provides active navigation in the form of a route line superimposed over the map, and both graphic and voice turn-by-turn instructions. You can modify any route to include via points (points along the route that you specify) and also change many aspects of route navigation using the Route Preferences options. Once created, a route can be saved for later use.

To access the Routes Menu:

1. From the Map Page, open the Main Menu and tap **Routes** to display the Routes Menu or tap the **Routes** icon on the Map Page tool bar. If there is no active route, only three options appear, Route Preferences, Resume Navigation (if you have previously been navigating a route), Saved Routes and Speak. A new route can only be created after you have selected a destination from the Map Page or from the Find Feature.

When a route is active the Route Menu will display Stop Navigation, Recalculate, Detour, Edit Vias and Turns Page options in addition to those previously mentioned.

A route cannot be calculated unless the GPS receiver has determined your current location and you have selected a destination. Check the GPS status message at the top of the Map Page before selecting a destination. Routes are simulated if there is no GPS connection.

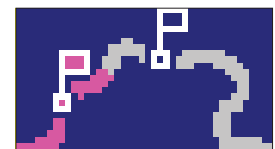
Creating a Route

Before beginning route navigation, you must select a destination. Once the destination is determined and you tap the on-screen "Route To It" button, the Route feature creates a route to that destination.

To create a Route to a destination using the Map:

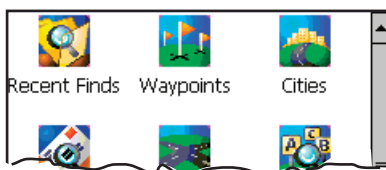
1. From the Map Page, use the stylus to place the Map Pointer on a map item.
2. Then tap the **Details** icon to display the Location Dialog. Confirm that the location displayed is your desired destination and tap the **Route To It** button at the bottom of the display.
3. Observe the small pop-up graphic at the bottom of right of the display indicating that the route is being calculated. If checked in the routing preferences options (refer to page 24), a Route Preference options menu appears, allowing you to select Faster Time, Shorter Distance or Off Road routes. When the routing calculation is complete you will observe a highlighted overlay showing your route on the map.

"Calculating Route" Graphic
appears in lower right side of map

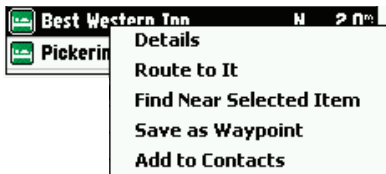


GPS Applications

Routes



The Find Menu



Selected Find Item Option Menu



Locate Address in Garmin Que



Matched Address "Route To It"

To create a Route to a destination using the Find feature:

1. From the Menu tool bar, tap the **Find** (binoculars) icon to display the Find Menu.
2. Choose a Find category to search for the desired destination location. Refer to detailed instructions for using the Find feature on page 9.
3. When you have selected a destination, place the stylus on the listing until an options menu appears, then either select "Details" or "Route To It". "Route To It" begins route calculation, while the "Details" option allows you to view information about the destination before tapping the "Route To It" button at the bottom of the page.
4. Tap **OK** to return to the Map Page to view the route on the map.

To create a Route to a Contact Location using the Find Feature:

1. From the Contacts List, use the stylus to select an entry with an address.
2. Then hold the stylus in place to display the drop-down menu and select **Locate in Garmin Que** to display the Find Address Page.
3. If the address from the Contacts List is in the map database, the City, Number, Street and Postal Code fields will contain the address data.
4. Tap **Search** to display the best matches.
5. Highlight your choice and hold the stylus in place to display the drop-down menu.
6. Select **Route To It** to begin the route calculation.

You can also tap the **Main Menu** at the bottom of the page with the address highlighted and select the same option.

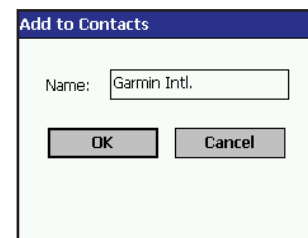
Or... tap the **Location** icon on the tool bar to begin route calculation.

Note: If the address from the Contacts List is not in the map database, a "No address found" message will appear. The address can be correct, but you may not have map data loaded that supports the region where the address is located. For example: If you are in the Los Angeles area and have map data loaded to support only that region and you choose an address in the Seattle region. Without map data for that region, no match can be achieved.

To learn how to add a Find Feature item to your Contacts List, see below.

To Add a Find Feature Item to the Contacts List:

1. From the Main Menu for a Find Feature Address, Intersection or highlighted Point of Interest, select "Add to Contacts" and any item with an address will be added to the Contacts List. For addresses and intersections, you will be prompted to enter a name before adding to Contacts.



cf Que™ 1620

GPS Applications

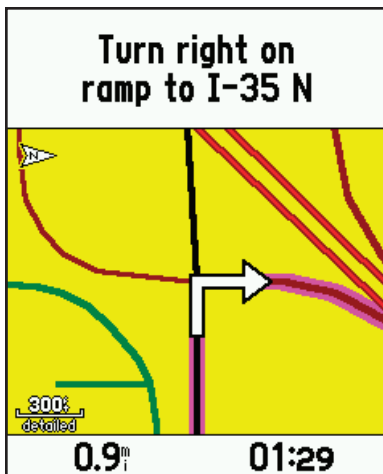
Routes

Heading	Arrival Time	Dist to Turn
N	11:58 ^{AM}	0.9 ^m
151st St to I-35 N		

Route Navigation Data Fields

0.9 ^m	Turn right on ramp to I-35 N	01:29 12:20 ^{PM}
20 ^m	Exit 234A on right to ramp to S 7th St Tfwy	17:40 12:37 ^{PM}
21 ^m	Turn left on W 39th Ave	19:31 12:38 ^{PM}
	Turn right on Southwest Tfwy	21:26 12:40 ^{PM}
22 ^m	Arrive at 334 Westport Rd on left	23:04 12:42 ^{PM}

Route Turns List



Turn Preview Page

Route Navigation

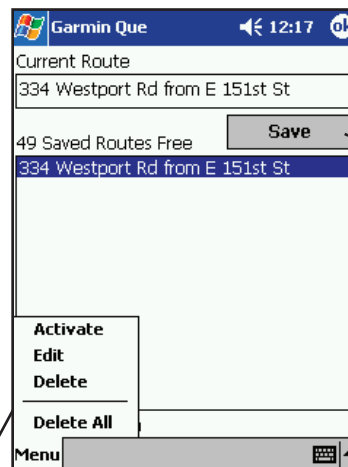
Once active, the route provides you with a variety of navigation aids. The data fields at the top of the Map Page change to display your speed, the distance to the next turn on your route, the time to the next turn based on your current speed and the time of arrival at your destination. A message field below the data fields provides directions for each leg of the route. Prior to each turn, a turn preview page displays along with voice instructions. You can view a list of all turns for a particular route.

To view the Turns Page:

1. From the Map Page with a route active, tap the **Main Menu** to select the Routes option or just tap the **Route** icon on the tool bar.
2. When the Route Menu displays, tap the **Turns** icon to display the Turns Page. Each turn on the route is displayed on this page. Each turn entry provides written instructions, the distance to the next turn, a turn direction arrow, the time required to drive to the next turn and the time of arrival at the next turn based on your current speed.
3. To view the turn in detail, tap the turn entry to display the Turn Preview Page with a detailed graphic of the turn. Tap the Turn Preview page to return to the Turns List.

To Save a Route:

1. From the Routes Page, tap the **Saved Routes** icon to display the Saved Routes List.
 2. The current or last navigated route "To and From" description will be displayed at the top of the page. Tap the **Save** button to save it to the list.
 3. From the Saved Routes Main Menu, you can Activate, Edit, and Delete a selected route.
- Or... Delete All routes on the list.



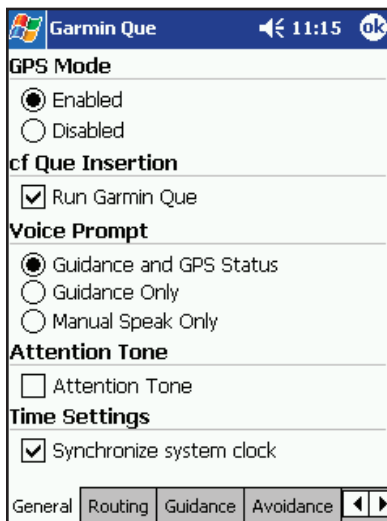
Save Button

Saved Route Options Menu

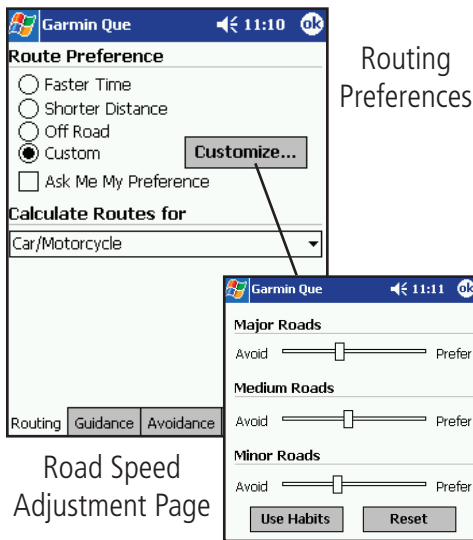
cf Que™ 1620

GPS Applications

Routes

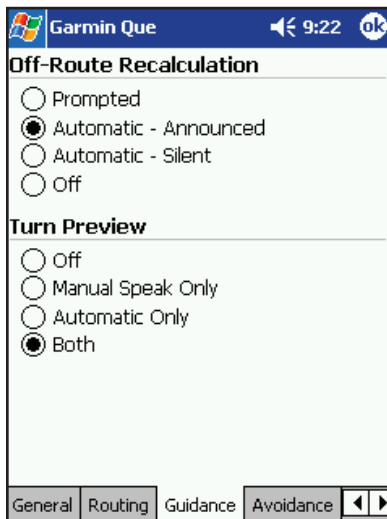


General Preferences



Routing Preferences

Road Speed Adjustment Page



Guidance Preferences

Customizing Route Navigation

You can use the Route Preferences, Detour, Edit Vias, and Recalculate options to customize route navigation to meet your requirements. To determine the way a route is calculated, whether or not some routing features are implemented automatically, modified or turned Off, you can use the System Setup and Routing options from the Main Menu on the Map Page. A set of factory default preferences will operate route navigation if you do not choose to make your own settings.

To set General Preferences:

1. From the Map Page, tap **Menu** then System Setup to display the General Preferences Page.
2. Under Voice Prompt options, tap **Guidance and GPS Status** if you want guidance prompts and GPS status information. Tap **Guidance Only** if you want prompts for routes only and tap **Manual Speak Only** if you only want prompts and status when you press a hard button.
3. On the same page under Attention Tone, tap **Attention Tone** to place a check mark next to this option to present a tone to prepare you to listen before each voice prompt. See notes on inside cover of this guide about voice prompts and speaker volume of your particular Pocket PC

To set Routing Preferences:

1. On the "Routing" preferences page, under Route Preference, tap **Faster Time**, **Shorter Distance**, **Off Road** or **Custom**. If you want this option to display every time you begin a route, tap **"Ask Me My Preferences"** to place a check mark next to it. When the checked, this option displays the route preference pop-up window before a route is calculated.
2. Next is the **Calculate Routes For:** option. Tap the displayed option to open the list of modes of travel and select the most appropriate.
3. If you selected **Custom** from the Route Preference options, you can improve the accuracy of the route calculation by adjusting the speed assumption for the types of roadways on a route.
4. Tap the **Customize** button to display a page with an adjustment slider for three roadway categories, place the stylus on the slider and drag in the direction desired.

Note that increases and decreases represent a range of approximately plus and minus 90%.

5. To use settings from previous driving, tap **Use Habits**, to reset all three categories, tap the **Reset** button.

To set Guidance Preferences:

1. On the "Guidance" preferences page, under Off-Route Recalculation, tap **Prompted**, **Automatic** (Announced or Silent) or **Off**.
2. For Next Turn Pop-up options, tap **Off**, **SPEAK Button Only**, **Automatic Only**, or **Both**.

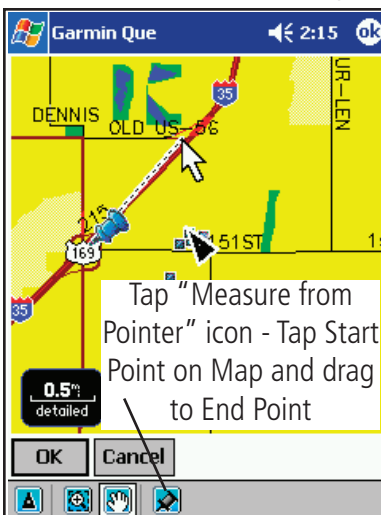
cf Que™ 1620

GPS Applications

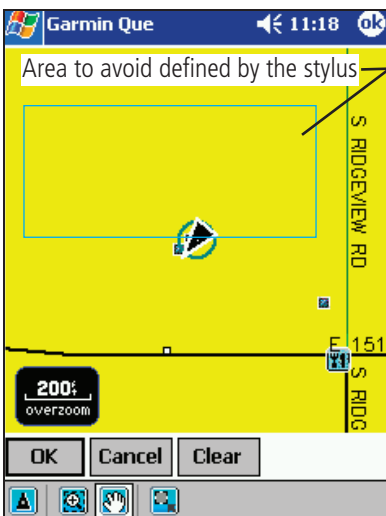
Routes



Avoid Roads and Areas Page



Road Section to Avoid Defined



Avoid Areas Selection Page

Road and Area Avoidance

You can select specific sections of roads and define areas to avoid when calculating a route. This helps you to avoid road construction, heavy traffic areas, etc.

To select types of roads to avoid:

1. Tap the desired type(s) of roads you wish to avoid when calculating a route to place a check in the adjacent box. You can choose from Highways, Toll Roads, U-Turns and Unpaved Roads.
2. To unselect a road tap the road type to remove the check mark.

To select specific sections of roads to avoid:

1. Tap the **Add Road** button to display Avoid Roads Setup Page.
2. Select a Start Point by using your current location or tap the "Measure From Pointer" icon to place a start point on a selected road.
3. To determine the end point of the section of road to avoided, drag the stylus to the desired location on the map.
4. Tap the **OK** button to display the road section on the map.
5. Tap **OK** to place it on the Avoid Roads list. Tap the box next to any item on the list to place an "active" check in the box.
6. Tap and hold the stylus on a selected Avoid Roads item to View, Edit or Delete.

To select areas to avoid:

1. Tap the **Add Area** button to display the Avoid Areas Setup Page. The page will display a map with your current location centered on the map.
2. Use the **Drag and Zoom** tool zoom in on the area you want to avoid, or use the **Pan Map** tool to move to the area on the map.
3. Use the **Draw Box** tool from the Tool Bar to define the area you want to avoid.
4. Then tap the **OK** button and display the Avoid Area Detail Page where you can rename it and set an expiration date.
5. Tap **OK** to place it on the Avoid Area list. Tap the box adjacent to any item on the list to place an "active" check in the box.
6. Tap and hold the stylus on a selected Avoid Areas item to View, Edit or Delete.

Center Current Location on the Map

Drag Stylus to Pan the Map



Drag to Zoom In on an Area

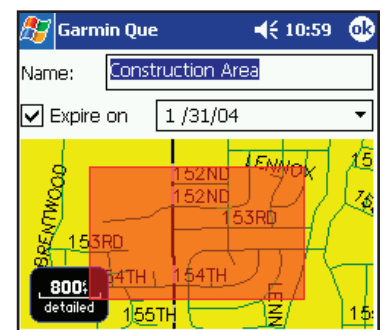
Drag the Stylus to Define the Area to Avoid

View/Edit

Delete

Delete All

Tap the View/Edit Option to display the Selected Area to Avoid Page

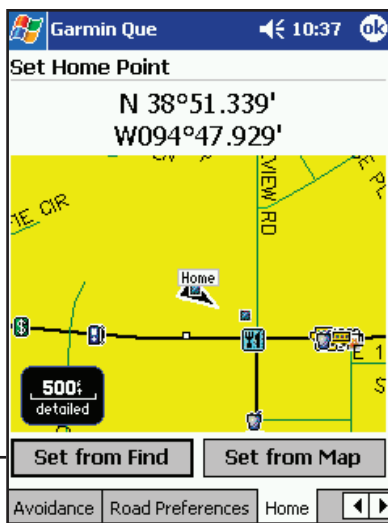


View Selected Area to Avoid Page

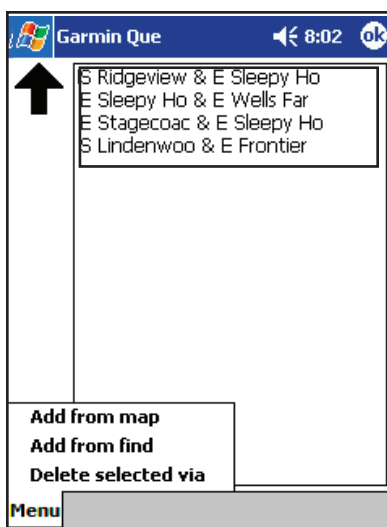
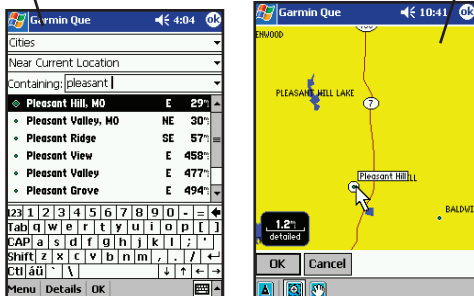
cf Que™ 1620

GPS Applications

Routes



Set Home Point Page



Route Via Points List

Set Home Point

You can select specific location as a Home Point to route to at any time you desire to stop navigating a route and return to that location. The Routing feature will create a route back to the Home Point from your current location.

To select a home point:

1. Tap the **Home** tab to display Set Home Point Page.
2. Select either the "Set From Find" or "Set From Map" option and tap the appropriate button.

To Set From Find: Choose the desired category icon and then an item from the category. Tap the **OK** button at the bottom of the Find Page. The New Home Point will display as "Home" on the Set Home Point Page.

To Set From Map: Use the tools at the bottom of the Set From Map Page to locate the map point you want to select. Tap the Point on the map and then tap **OK** to display the point as "Home" on the Set Home Point Page.

3. From this point on, anytime you want to create a route to your Home Point, tap the **Route** icon on the tool bar and then the **Route To Home** icon on the Routes Menu.

4. To change the Home Point, tap the **Home** tab of the Route Preferences Pages and repeat the process above.

Edit Vias

To make turns or stops at points along or near to your route, you can add via points that are incorporated into the route.

To create new waypoints along the Route (Edit Vias):

1. With a route active, open the **Routes Menu**, tap the **Edit Vias** icon to display the Edit Vias Page. The Route destination appears at the top of the page.
2. Tap the **Menu** to view the list of options. You can add via points from the Map or from the Find feature.

If using the Map, place the stylus on the point you want to add to the route and then tap the **OK** button to return to the Edit Vias list.

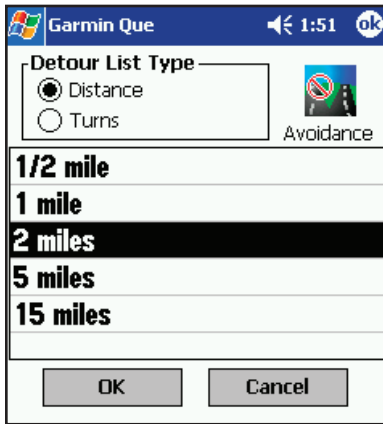
If using the Find feature, follow instructions for using the feature on page 12, select the item and tap **OK** to return to the Edit Vias list.

3. To change the order of vias on the list, highlight the desired via and then tap the **Up** arrow to move it up in the order or the **Down** arrow to move it down. The order of vias will determine path of the route.

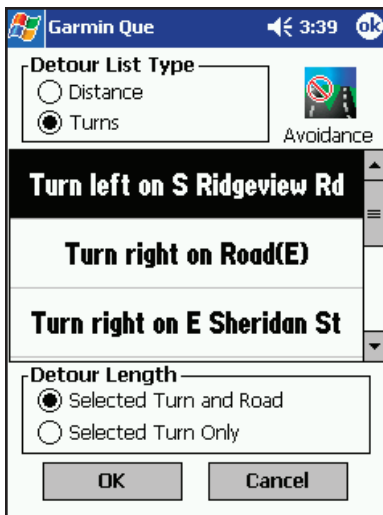
cf Que™ 1620

GPS Applications

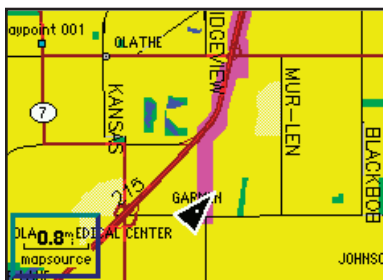
Routes



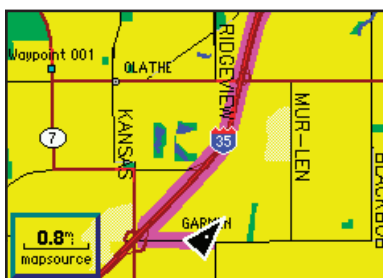
Route Detour Options Page



Detour Turns List



Original Route



Detoured Route

Detour

To navigate around obstacles such as traffic jams, construction, etc., you can use the Detour feature to recalculate your current route.

To Detour a specified distance around an obstacle on a Route:

1. Tap the **Detour** icon to display the Detour Options page.
2. Tap the **Distance** option and select the desired length of the route you want to avoid before returning to the route. Then tap **OK** to recalculate the route.

To Detour around a turn and section of roadway on a Route:

1. With the Detour Options page displayed, tap the **Turns** option to display the list of turns for the active route.
2. Scroll the list to find the turn you want to avoid and then tap the turn description. Then tap **OK**, the route will recalculate to avoid the selected turn and the section of roadway leading to the next turn on the list.

To Detour around a turn only on a Route:

1. Follow the instructions in step 1 above.
2. Scroll the list to find the turn you want to avoid then tap the turn description and then **OK** to recalculate the route to avoid the turn.

To Detour a specified section of a roadway on a Route:

Tap the **Avoidance** icon in the upper right corner of the screen to display the Avoidance page. Refer to page 25 for detailed instructions.

Recalculate

If you travel off a route you can quickly recalculate the route to get back on track to your destination. Routes can be recalculated manually or set to automatic.

To manually Recalculate a Route:

1. Tap the **Recalculate** icon from the Route page.
2. If you selected "Prompted" from Off-Route Recalculation in System Setup, you will be prompted to recalculate when you leave the route.

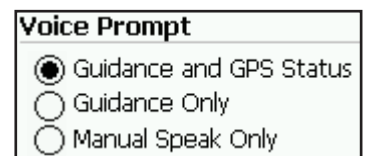
To automatically recalculate a Route, see Preferences on page 24.

Voice Guidance

Whenever you approach a turn on a route a voice describes the direction to turn and the distance ahead to the turn. You can use a hard button to play the voice when desired.

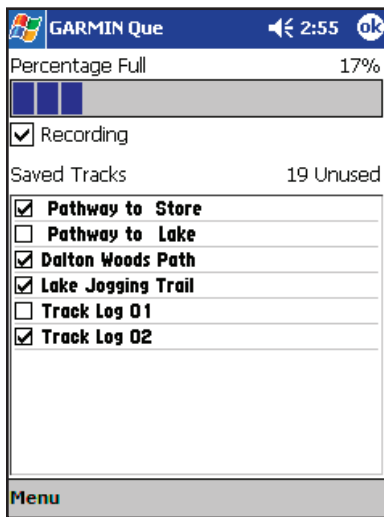
To map a Hard Button to Speak Next Instruction or GPS Status:

1. Follow detailed instructions for mapping Hard Buttons on page 33.

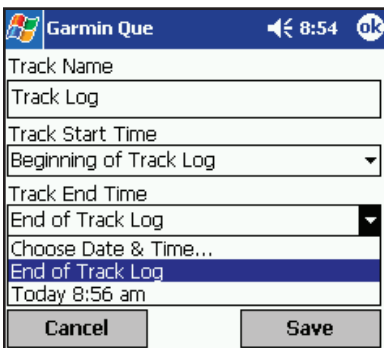


Guidance Voice Prompt Options

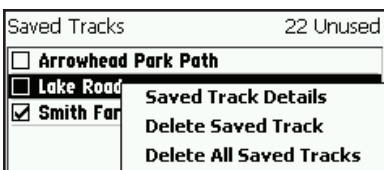
The Track Log



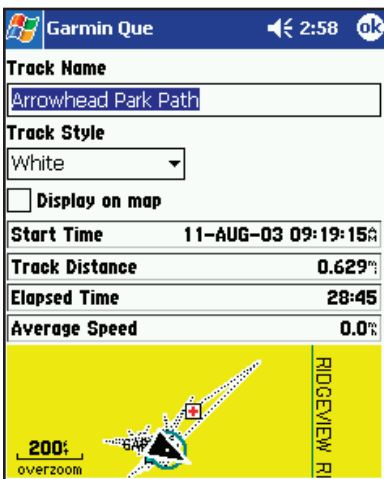
Track Log Page



Save Track Dialog



Saved Track Options



Saved Track Details Page

Using the Track Log Utility

The Track Log is a feature that allows you to create a log (record) of your travels, which you can save for later use.

To access the Track Log:

1. From the Map Page, open the **Main Menu** and then tap **Track Log**.

To record a Track:

1. From the Track Log page, tap **Recording** to place a check mark in the box adjacent to it. To stop recording a track log, tap **Recording** again to remove the check mark.

When the track log is full it will begin to record over the previous log.

A bar graph indicates the percentage of available space used. When the log approaches full capacity you may want to save it before it is lost.

To save a Track:

1. Tap the **Menu** on the tool bar at the base of the page to display the Options Menu.
2. Tap **Save Track Log** to display the Track Log dialog.
3. In the first field is the Track Name (it is automatically given a numeral identity). You can personalize it by renaming to a title of your choice.
4. The next two fields are "Track Start Time" and "Track End Time". Tap each field to select a beginning and end time for the saved track.
5. From the "Track Style" field, select a color for the track line when displayed on the Map Page.
6. Tap **Save** to save the track to the "Saved Tracks" list.

To view and edit Track details:

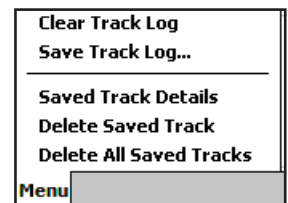
1. With the Track Log page displayed, place the stylus on the desired track from the track list and hold until a menu displays.
2. Tap **Saved Track Details** to edit the details page for that track.

To delete saved Tracks:

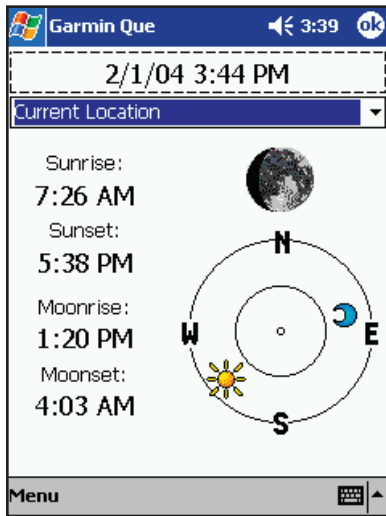
1. To delete a selected saved track, with the track highlighted, tap the appropriate option from the menu. To delete all saved tracks, tap the appropriate option from the menu.

To clear the Track Log:

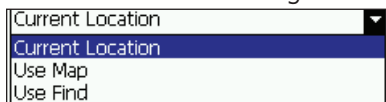
1. Tap the **Menu** tool bar at the bottom of the screen and select "Clear Track Log", then tap **Yes** when asked, "Clear the active track?"



The Sun and Moon Tables



Sun and Moon Page

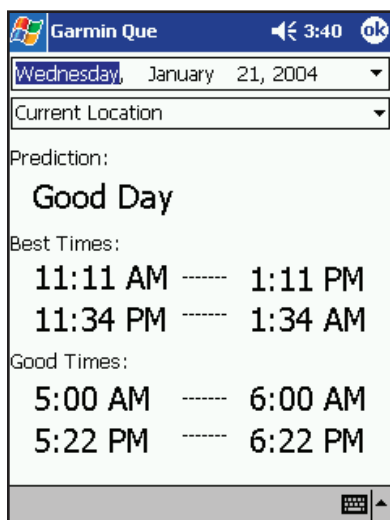


Location Options

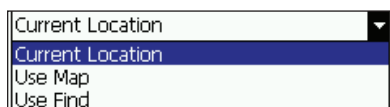


Animation Options Menu

The Hunt and Fish Tables



Hunt and Fish Page



Location Options

Using the Sun and Moon Tables

The Sun and Moon Page is a feature with tables that allow you to view the position of the sun and moon in relationship to the earth at any time, date and location.

To access the Sun and Moon Page:

1. From the Map Page, open the **Main Menu** and then tap **Utilities**.
2. Tap Sun and Moon to display the Sun and Moon Page. The sun and moon positions displayed are for your current position, date and time.

To display sun and moon positions for a specified time, date and location:

1. To view positions for a different date and time, tap the Date/Time field to display the Date and Time Setup Page and enter a new date or time. Tap the arrow at the end of the Date Field to display the Calendar (see below) and use the arrows at the end of the Time Field to change the time.
2. Tap **OK** to return to the Sun and Moon Page.
3. To view positions for a different location, the "Current Location" field and select either "Use Map" or "Use Find". If you have previously identified a map location with the Pointer, then "Point" will also be available as a choice. Make your selection and tap **OK** to return the Sun and Moon Page. To control Sun and Moon graphic animation, tap **Menu** on the Tool Bar, then tap your selection. Choose from "Stop", "By Hour" or "By Day".

Using the Hunt and Fish Tables

The Hunt and Fish Tables provide you with a listing of predicted best times for hunting and fishing for a chosen date and location.

To access the Hunt and Fish Page:

1. From the Map Page, open the **Main Menu** and then tap **Utilities**.
2. Tap Hunt and Fish to display the Page. The prediction and times displayed reflect the current location and date.

To display hunting and fishing predictions for a specified date and location:

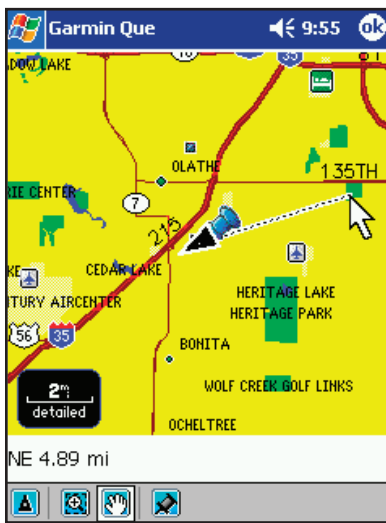
1. To view predictions for a different date, highlight the date field to display the Date and Time Setup Page. Tap the arrow at the end of the Date Field to display the Setup Calendar, then tap the arrows on either side of the Month and Year to move back or ahead, then tap the desired date.

Wednesday, January 21, 2004						
◀ January 2004 ▶						
S	M	T	W	T	F	S
28	29	30	31	1	2	3
4	5	6	7	8	9	10
11	12	13	14	15	16	17
18	19	20	21	22	23	24
25	26	27	28	29	30	31
1	2	3	4	5	6	7
Today: 1/21/04						
2. To view predictions for a different location, tap the "Current Location" field and select either "Use Map" or "Use Find". If you have previously identified a map location with the Pointer, then "Point" will be available as a choice. Make your selection and tap **OK** to return to the Page.

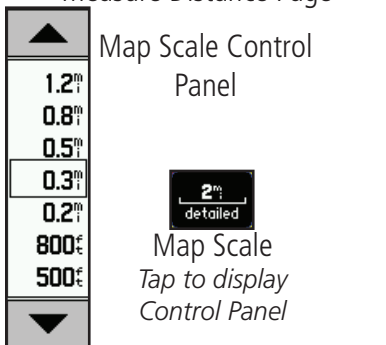
cf Que™ 1620

GPS Applications

Measure Distance



Measure Distance Page



Map Scale Control Panel



Tool Bar Icons



Measure Between Two Points

Using the Measure Distance Utility

Measure Distance is a feature that allows you to determine the distance between two items on the map.

To access Measure Distance:

1. From the Map Page, open the **Main Menu** and then tap **Utilities** to display the Utilities List.
2. Tap **Measure Distance** to display the Measure Distance Page.

To Measure Distance from your current location:

1. Adjust the map scale to include your current location and the point you want to measure to. Tap the map scale in the lower left corner of the map to display the map scale control panel. Select the desired scale. Or... use the "Zoom Out" tool from the Tool Bar to define an area on the map and enlarge it.
2. Tap an item on the map and observe the direction and distance in the field above the Tool Bar.

To Measure Distance between two points on the map:

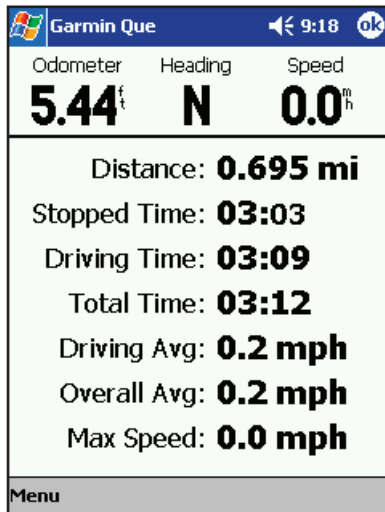
1. Adjust the map scale to include the points you want to measure between. See Step 1 above.
2. Tap the first item on the map and observe the measurement line connecting your current location to the item. Note the Map Pin icon located behind the Current Position Icon.
3. Tap the **Map Pin** icon on the Toolbar to move it to the first map item. Then tap the second map item to measure the distance between the two. The distance displays in the field above the Tool Bar.

If you don't want to lose map detail by zooming out in order view both points on the map, you can tap the Pan Map icon and use the stylus to pan the map to the second point on the map.

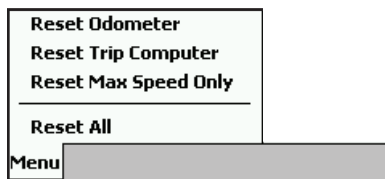
cf Que™ 1620

GPS Applications

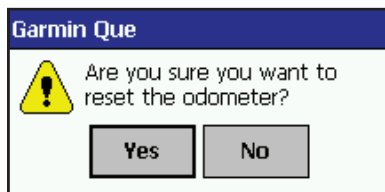
The Trip Computer



Trip Computer Page



Trip Computer Options Menu



Reset Prompt

Using the Trip Computer

The Trip Computer is the feature that allows you to monitor your progress when navigating. Designed primarily for vehicular travel, it also works for other modes of travel as well.

When displayed, the Trip Computer provides you with information fields to show the GPS receiver status, the date and time, direction of travels and current speed. There are fields that display distance traveled for a particular trip, Stopped Time, Driving Speed Average, Driving Time, the Overall Average Speed (includes stopped and driving time), the Total Time elapsed since beginning a trip, the Maximum Speed attained and an Odometer totaling distance for all trips. Menu options allow you to Reset the Computer, Reset the Maximum Speed and Reset the Odometer.

To access the Trip Computer:

1. From the Map Page, open the Main Menu and then tap **Trip Computer**.

To use the Trip Computer Reset Options:

1. From the **Trip Computer**, tap the **Menu** bar and then tap the desired Reset option to display the option dialog window.
2. Tap the **Yes** option when asked, "Are you sure you want to reset the...".
 - **Reset Odometer** - Resets only the Odometer at the top of the page.
 - **Reset Trip Computer** - Resets the trip information list from Distance to Overall Average.
 - **Reset Max Speed Only** - Resets only the Maximum recorded Speed.
 - **Reset All** - Resets all information to zero.

To return to the Map Page:

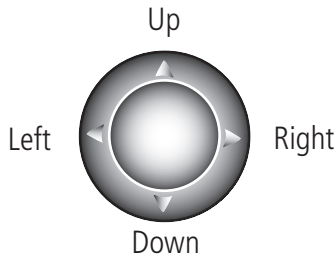
1. Tap the "OK" icon at the top of the screen to return directly to the Map Page.

cf Que™ 1620

Hardware Mapping

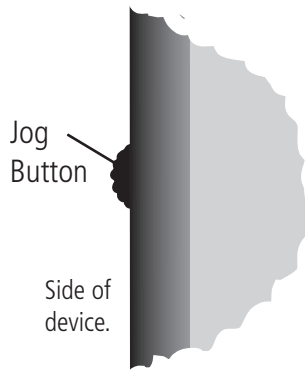
The Hard Buttons

The Arrow Button



(Graphic representation, may not exactly resemble the button on your device.)

The Jog Button



Using the Arrow Button to access cf Que features

All Pocket PC's have a four or five position button used for scrolling lists, etc. For our purposes we will refer to this button as the **Arrow** button. You can use this button to operate many of the cf Que navigation features.

To change the Map Scale on the Map Page:

1. With the Map Page displayed, press the **Top** or **Bottom** of the Arrow Button to increase or decrease the map scale. Hold the button down to zoom the scale. Observe the map scale window in the lower left corner of the map to determine the desired scale.

To scroll any list:

1. With an entry on the list highlighted, press the top or bottom of the Arrow Button.

Using the Jog Button to change map scale or scroll lists

Many Pocket PC's have a special button on the side of the device used for scrolling lists, etc. For our purposes we will refer to this button as the **Jog Button**. You can use this button to not only scroll lists but change the map scale up or down when viewing the Map Page. Note that for some lists in the Que application, an item must be highlighted before you can scroll the list.

To change the Map Scale on the Map Page:

1. With the Map Page displayed, press or rotate **Up** or **Down** to increase or decrease the map scale.

To scroll a list:

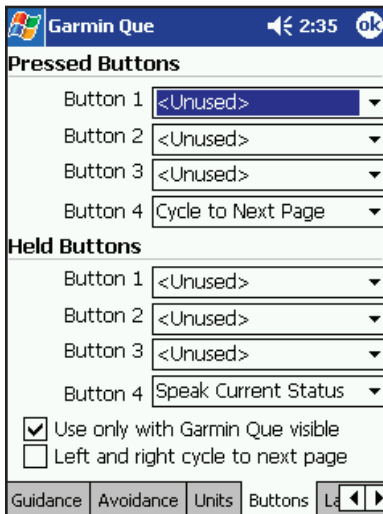
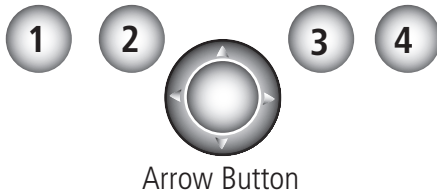
1. With the list displayed and an item highlighted, move the button **Up** or **Down** to scroll the list.

cf Que™ 1620

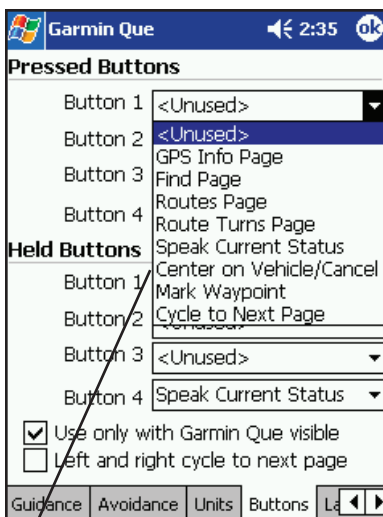
Hardware Mapping

The Hard Buttons

Hard Button Positions 1 to 4



Hard Button Mapping Page



Button Options List

Mapping Que feature access to device hard buttons

All Pocket PC's have hard buttons that can be programmed (mapped) to perform a specific function. When the Que application is running and visible, pressing a programmed hard button will display a specific feature.

To map a hard button to display a Que feature:

1. From the Map Page, tap the **Main Menu** and select "System Setup".
2. Tap the **Buttons** tab to display the Hard Button Mapping Page.
3. To map buttons 1 through 4 for press and release functions, tap each field to display a list of feature options. Then tap the feature you desire mapped to that button.
4. To map buttons 1 through 4 for press and hold functions, tap each field to display a list of feature options. Then tap the feature you desire mapped to that button.
5. If you want the mapped buttons to function only when the Que application is displayed, then tap the "Un-map when app not visible." option to place a check mark in the box.
6. If you want to use the Arrow Button to cycle from page to page, tap the "Left and right cycle to next page" option to place a check in that box.

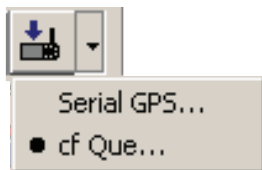
Helpful Hints:

- To ease the activation of Garmin Que to visible status when running multiple programs, map one of the buttons to display it when pressed. Follow instructions for mapping programs to hard buttons contained in your Pocket PC Owner's Manual.
- To shorten the process of returning to the Map Page, Button Number 4 is mapped by default to the "Cycle to Next Page" option. Pressing the hard button will return you to the next page in order starting with the Map Page.
- To minimize the distraction of observing route instructions while driving, Button Number 4 is also mapped to "Speak Next Instruction". Holding this mapped button will speak the next route navigation instruction without the need to divert your attention from driving conditions. Press the button at any time to repeat the instruction.

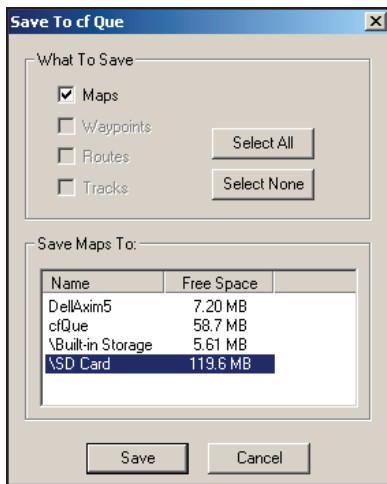
cf Que™ 1620

Map Data

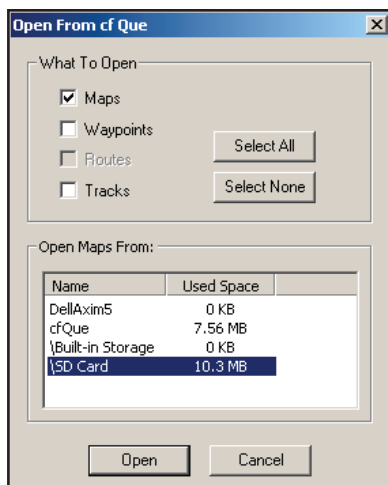
Transferring Map Data



"Save To Device" icon and Options



"Save To cf Que" Window



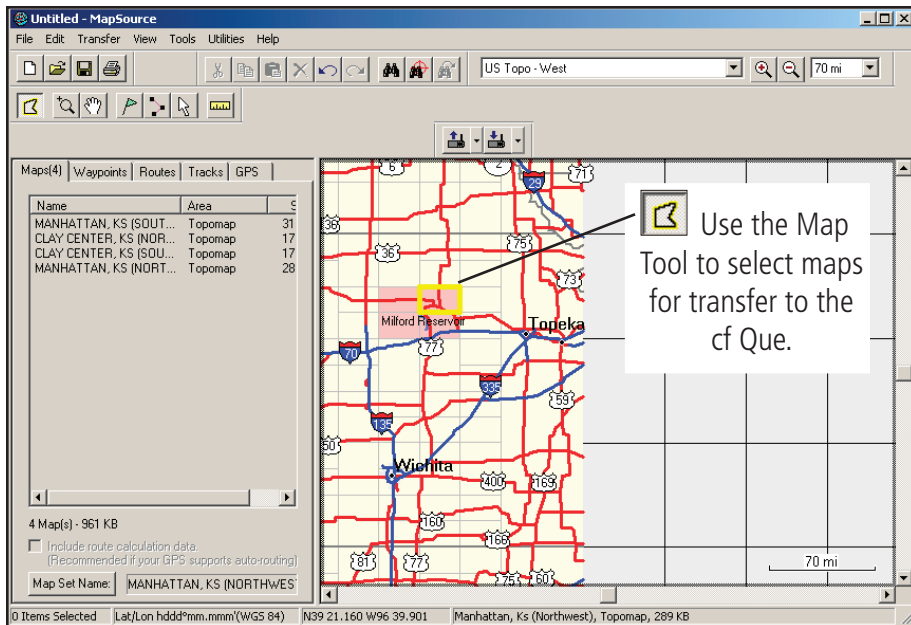
Open From cf Que Window

Minimum PC requirements for MapSource mapping products

Pentium-class processor or compatible, Windows 98, NT 4.0, 2000, ME, or XP operating system, 32 MB RAM, 300 MB - 1.5 GB of free hard disk space, CD-ROM drive, 256-color display adapter and monitor, mouse or other pointing device, internet access recommended

Transferring Other Types of Detailed Maps from MapSource®

Garmin MapSource offers a wide variety of detailed mapping data other than those provided with your unit, such as topographic and marine charts. If you plan to add additional mapping data or already have other versions of MapSource maps other than those provided with your cf Que, you can transfer those maps to the device using the methods described below.



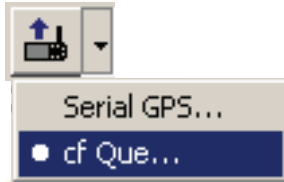
To transfer additional detailed maps to your cf Que:

1. Open MapSource on your PC.
2. Select the **Map Tool** to highlight desired maps from the program and place in the Maps dialog.
3. Then click the **Save To cf Que** button and select cf Que.
4. When the "Save To cf Que" window opens, select a storage location from the options in the "Save Maps To" dialog and then click the **Save** button.
5. A "Saving To cf Que" window appears and then states "The data was successfully saved" when transfer is complete.
6. Click **OK** to finish.

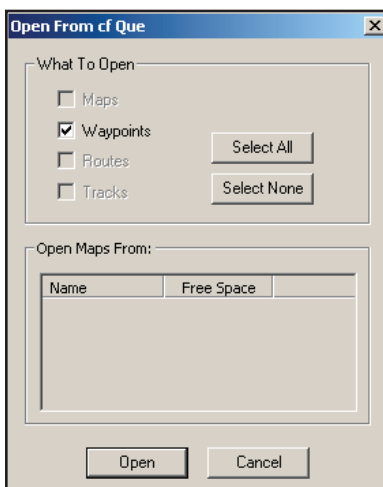
To transfer detailed maps from the cf Que to MapSource:

1. Open MapSource on your PC.
2. Select the **Maps** tab to display the Maps List dialog box.
3. Then click the **Open from cf Que** button and select cf Que.
4. When the "Open From cf Que" window opens, select "Maps" and the Storage Location from the options and then click the **Open** button.
5. An "Opening From cf Que" window appears and then states "The data was successfully opened" when transfer is complete.
6. Click **OK** to finish.

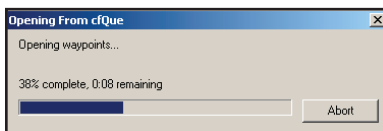
Transferring Map Data



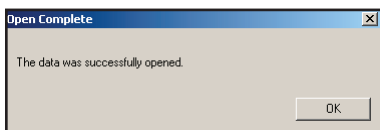
Save From Device Icon and Options



Open From cf Que Window



Opening From cf Que Window



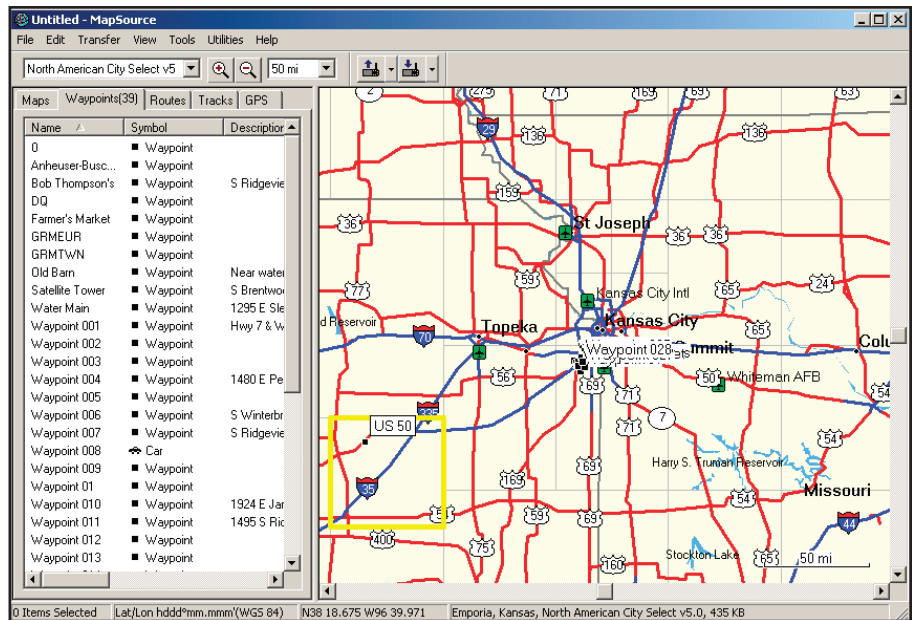
Open Complete Window

Transferring Waypoints and Saved Tracks to MapSource®

Garmin MapSource allows you to transfer lists of waypoints and saved tracks for storage for later use. This allows you to reduce the number of items stored on your Pocket PC in order to add more without the need for deleting those items you would like to save for future reference.

To transfer Waypoints to MapSource on your PC:

1. Open MapSource on your PC..
2. Select the Waypoints tab to display the field for the list of waypoints to be placed.
3. Then click the drop down list arrow next to the "Save From Device" button and select "cf Que..." .
4. When the "Open from cf Que" dialog displays, select "Waypoints" and then click **Open**.
5. An "Opening from cf Que" window will display and then signal "Data Successfully Saved" when all waypoints have been opened. Click **OK** to transfer the waypoints to the MapSource Waypoints field.
6. If you haven't already edited the list of waypoints to remove those you don't want to save, you can use the edit feature in MapSource to edit your list.
7. Before closing, save the list of waypoints to a file on your PC.



List of Transferred Waypoints

To transfer Saved Tracks to MapSource on your PC:

1. Follow the same steps above, only select the Tracks tab.

NOTE: To transfer Waypoints or Tracks from MapSource to the cf Que, follow the same steps for transferring maps to the cf Que on page 34, only select Waypoints or Tracks from the "What To Save" options.

Currently, you cannot transfer Saved Routes from cf Que to MapSource.

cf Que™ 1620

Additional Information

Specifications

Internal System

Operating System: Microsoft® Pocket PC 2002 -2003
Embedded capabilities: GPS receiver
Expandable memory: 64 MB internal CF memory (available only for basemap and/or detailed maps)

Application Software

Garmin "Que": GPS Info, Address Lookup, Electronic Mapping, Track Log, Trip Computer, Automatic Route Generation, and Turn-By-Turn Voice Guidance

Moving Map Features

Basemap: Routable basemap contains state and country boundaries, lakes, rivers, streams, airports, cities, towns, coastlines, state and interstate highways, local thoroughfares and secondary roads within metro areas

CD-ROM: Accepts downloadable map detail from Garmin PC-based MapSource City Select™ and City Navigator™ CD-ROM's which provide street-level detail, addresses, listings of nearest restaurant, hotels, ATMs and more. Accepts most other MapSource map data as well as U.S. Topos and Marine charts

Navigation features

Routes: Automatically calculated with turn-by-turn instructions; using built-in basemap, routes include interstates, highways and major thoroughfares; with detailed data from CD-ROM, routes include residential street-level detail

Trip computer: Resettable odometer, timers, average and max. speeds

GPS performance

Receiver: 12 parallel channel GPS receiver continuously tracks and uses up to 12 satellites to compute and update your position

Acquisition times:

Warm: Approximately 15 seconds

Cold: Approximately 45 seconds

AutoLocate™: Approximately 5 minutes



cf Que GPS Module

Update rate: 1/second continuous

cf Que™ 1620

Additional Information

Specifications

GPS accuracy:
Position: < 15 meters, 95% typical*
Velocity: 0.05 meter/sec steady state

Antenna: Flip-up adjustable GPS antenna

Power Source: Host PDA via CompactFlash slot
(3.3 ± 5% or 5.0 ± 10% VDC)
Average Current Draw = 65mA

Physical

Size: 1.7"W x 2"H x 0.5" D (43 x 51 x 12.5 mm)
Weight: 1.5 ounces (42 g)
Operating range: 0-60° C (32-140° F)

Specifications are subject to change without notice.

* Subject to accuracy degradation to 100m 2DRMS under the U.S. Department of Defense Selective Availability Program.

Care and Maintenance

Cleaning

The Garmin cf Que GPS Receiver is constructed of high quality materials and does not require user maintenance other than occasional cleaning. DO NOT ATTEMPT TO CLEAN THE cf Que WHILE INSERTED IN THE COMPACTFLASH SLOT! Use a clean cloth lightly dampened with a mild detergent solution and wipe only those surfaces exposed to touch in the normal activity of use. DO NOT ALLOW ANY LIQUID NEAR THE CONTACT PORTS AT THE BOTTOM OF THE cf Que. The cf Que is not waterproof and exposure to excessive amounts of liquid may damage the unit beyond repair.

Storage

When not in use the cf Que should be stored in a cool dry place. Storage temperatures should not exceed 212° F (100° C)

If you encounter operational problems that you cannot solve using this guide, first determine that they are not related to operation of your Pocket PC, then:

Contact Garmin Product Support at 913/397.8200 or 800/800.1020

Troubleshooting Guide		
Symptom	Probable Cause	Remedy
GPS Signal Related Problems		
"No GPS Connected" message	cf Que not inserted or not fully inserted.	Fully insert cf Que in CompactFlash slot.
"Waiting for GPS" message stays on	cf Que is not powering up	Reset your Pocket PC
"Acquiring Satellites" message stays on	GPS receiver cannot view satellites	Move to location with clear view of the sky
"Lost Satellite Reception" message appears repeatedly	GPS receiver cannot maintain a constant signal Antenna is incorrectly positioned	Move to location with less interference Adjust antenna for best reception
Cannot achieve reliable satellite signals when the cf Que is mounted on my auto dash.	Some auto windshields are tinted using a thin metallic coating to reflect ultraviolet sun rays.	Most vehicles with this type windshield will block satellite signals as well. GPS devices will not operate in this type vehicle.
When mounted on my auto dash, the satellite signal reception is weak.	Car radios and CD players can generate electrical fields that can interfere with satellite signals	Relocate the cf Que away from the radio or turn off the radio when using the cf Que to navigate
Map Messages at Startup or Card Insertion		
"Can't Unlock Maps"	You must enter the unlock code during MapSource installation	Follow installation instructions on the setup CD-ROM
"Detailed Maps Don't Support Routing"	These maps are not the type used for auto-routing	Select maps designed for auto-routing.
"Too Many Maps on Data Card"	The map sets you are trying to load are too large for the space available in the storage location	Check the space available in the chosen location and choose another location with enough space or reduce the map set size
Map Data Related Problems		
No Find Feature items listed for "By Name" options	Maps that support that option are not installed from MapSource	Open MapSource and select maps from City Select version 5.0, then save to cf Que
"None Found" message when accessing the Manmade Places, Water Features, and Land Features Find Options	These options only display data from topographic maps and marine charts	Load maps of this type using MapSource topographic and marine chart map data
Find Feature Search Messages		
"Select Street Before Searching"	You have tapped the "Search" button before entering the name of the street for an address	Enter a street name before beginning your search for an address
"Select Two Streets Before Searching"	You have entered none or only one street before searching for an intersection	Enter both street names to complete the intersection description
"None Found"	This message appears when there is no data in the loaded maps matching the entry	Try entering a variation of the item description

cf Que™ 1620

Additional Information

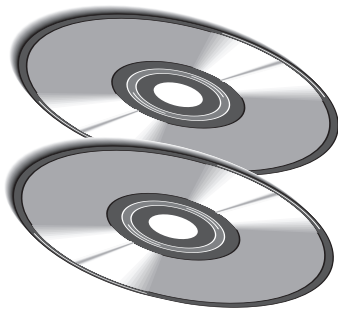
Accessories



Universal PDA Mount with Portable Dash Mount



Dash Base Mount with temporary and permanent adhesive disks.



MapSource Map Data CD's

Your Garmin cf Que is provided with most of the accessories shown below. However, you may want to purchase a replacement component or add an additional Universal PDA Mount for use in a second vehicle. You may want to purchase additional MapSource® map data CD's with maps for another country, topographic maps or marine charts. Consult your Garmin Dealer or the Garmin website (www.garmin.com) for accessory pricing and availability.

Replacement Universal PDA Mount - Adjusts to hold most PDAs on a vehicle dash for cf Que vehicular navigation. Includes both permanent dash base and portable dash mounts.

Replacement Dash Base Mount - Includes one temporary and one permanent adhesive disk. Allows transfer of the PDA Mount to another vehicle.

Replacement Portable Dash Friction Mount - Non-skid bag-type base provides convenient portable dash mounting solution.

Replacement Temporary Adhesive Disks (3 Pack) - Adheres the Dash Base Mount to a vehicle dash.

Replacement Permanent Adhesive Disk (3 Pack) - Adheres the Dash Base Mount to a vehicle dash.



Portable Dash Mount

MapSource® Cartography

Additional MapSource map data sets can be purchased from your Garmin Dealer or on-line from Garmin. Consult your Garmin Dealer for a viable MapSource maps compatible for use with the cf Que or visit the Garmin website at (www.garmin.com).

A

Accuracy Circle 3
 Active Route 21-23
 Addresses
 Finding 14
 On Map 3
 Add To Contacts 22
 All Points of Interest 16
 Altitude 19, 20
 Antenna 1, 38
 Arrow, Pointer (Map Pointer) 3
 Attractions, Finding 16
 Audio (Voice Prompts) 24, 27, 31
 Automatic Off-Route Calculation 24
 AutoZoom 7
 Avoidance, Road and Area 11, 25

B

Buttons 11, 27, 33
 By Name, Search 12

C

Calculating a Route 21
 Cities
 Finding By Name 13
 Finding Nearest 13
 Information 13
 On Map 13
 Color Mode, Map Display 3, 4, 7
 Creating a Route 21
 Current Location (Position Arrow) 2
 Current Time Synchronization 10

D

Deleting
 A Route 23
 A Track 28
 A Waypoint 19
 Details, Map 7
 Details Page 13
 Detailed Maps, Setup 7
 Detours (Adding) 27
 Distance (Measuring) 30

E

Ending a Route (Stop Navigating) 21

Editing

Via Points on a Route 21, 26
 Waypoints 19

Elevation 19, 20

Emergency and Gov., Finding 16

Entertainment, Finding 16

F

Faster Time (Route) 24

Find Menus

 Addresses 14
 All Points of Interest 16
 Attractions 16
 Cities 13
 Emergency and Gov. 16
 Entertainment 16
 Food and Drink 16
 Intersections 15
 Land Features 16
 Lodging 16
 Manmade Places 16
 Recent Finds 12
 Services 16
 Shopping 16
 Transportation 16
 Water Features 16
 Waypoints 17

G

GPS

 Antenna 1
 Location 2, 20
 Mode 1, 10
 Receiver 1, 20

Guidance Preferences 10, 24

H

Help 6

I

Intersections, Finding 15
 Initializing the Receiver 1

L

Language Selection 11
 Location Information 3
 Locate in Garmin Que 22

M

Map
 Orientation 3, 7
 Panning 3
 Pointer 3
 Page 2
 Scale 2
 Selection 7
 Setup 4, 7-9
 Marking Your location 18
 Maximum Speed 31
 Measuring Distance 30

N

Navigating Routes 23
 Nearest Current Location 12
 New Location 20
 Next Turn 23
 Night Mode 3, 7
 North Up 3, 7

O

Odometer 31
 Off Road Route Navigation 24
 Off-Route Recalculation 24
 Orientation, Map 3, 7
 Overall Average Speed 31

P

Panning the Map 3
 Pointer Arrow (Map Pointer) 3
 Points of Interest 16
 Position Coordinates 3, 20

R

Recalculate Route 21, 24-27
 Receiver Status 1, 20
 Recently Found Places 12
 Renaming Waypoints 19
 Resetting Trip Information 31
 Resume Route Navigation 21
 Route Preferences 24
 Routes Page 21

S

Satellite Information Page 20
 Saving Routes 23
 Saving Tracks 28

Signal Strength 20
 Software License Agreement i-ii
 Specifications 36-37
 Status Messages 1, 20

T

Table of Contents v
 Text Size 8-9
 3D GPS Location 20
 2D GPS Location 20
 Time Synchronization 10
 Track Log 28
 Track Up 3, 7
 Trip Computer 31
 Troubleshooting 38
 Turns Page 23
 Turn Preview 23

U

Unit ID 6
 Units of Measure 11

V

Vehicular Safety iv
 Via Points 26
 Voice Prompts 24, 27, 33

W

Warnings and Cautions iii-iv
 Waypoints
 Creating 18
 Editing 19
 Moving 19
 Searching for 17
 Symbols 19

Z

Zooming 2, 3, 32



© Copyright 2004 Garmin Ltd. or its subsidiaries

Garmin International, Inc.
1200 East 151st Street, Olathe, Kansas 66062, U.S.A.

Garmin (Europe) Ltd.
Unit 5, The Quadrangle, Abbey Park Industrial Estate, Romsey, SO51 9DL, U.K.

Garmin Corporation
No. 68, Jangshu 2nd Road, Shijr, Taipei County, Taiwan

www.garmin.com

Part Number 190-00279-00 Rev. B